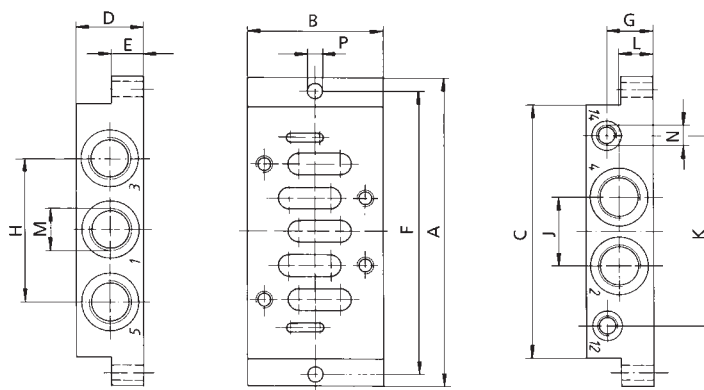


Sub-base Mounted Valves to ISO 5599/1



Accessories

Individual Base Form A to VDMA 24345, with Side Ports

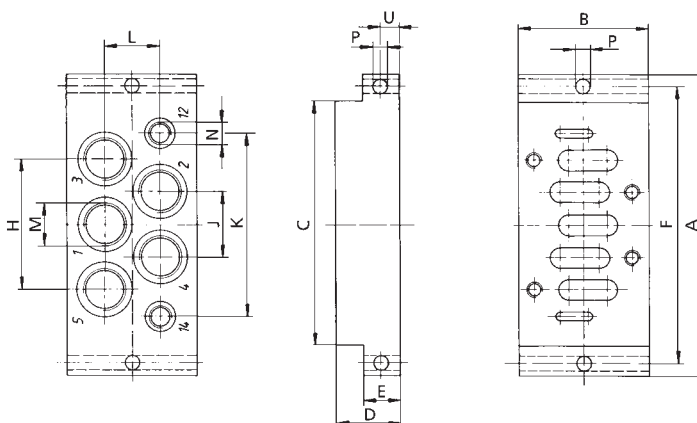


Dimensions [mm]

Series	A	B	C	D	E	F	G	H	J	K	L	M	N	P	Weight approx. [kg]	Order Code
ISO 1	110.0	48.0	84.0	32.0	10.0	98.0	22.0	48.0	25.0	64.0	11.0	G 1/4	G 1/8	5.5	0.200	103-544
ISO 2	124.0	57.0	95.0	40.0	13.0	112.0	31.0	56.0	28.0	73.0	15.0	G 3/8	G 1/8	6.6	0.300	103-549
ISO 3	149.0	64.0	119.0	32.0	18.0	136.0	22.0	68.0	32.0	90.0	16.0	G 1/2	G 1/8	6.6	0.400	103-545

On request: individual bases with NPTF-thread

Individual Base Form B to VDMA 24345, with Bottom Ports



Dimensions [mm]

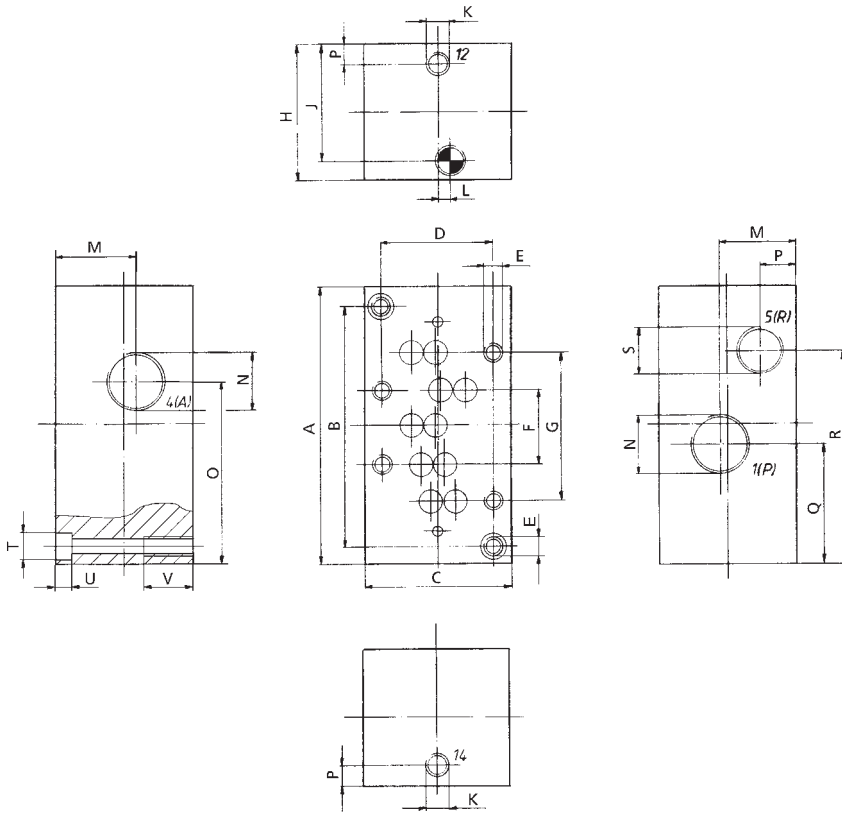
Series	A	B	C	D	E	F	G	H	J	K	L	M	N	P	Weight approx. [kg]	Order Code
ISO 1	110.0	46.0	84.0	30.0	10.0	98.0	5.0	46.0	23.0	62.0	23.0	G 1/4	G 1/8	5.5	0.190	103-542
ISO 2	124.0	56.0	95.0	35.0	13.0	112.0	6.5	56.0	26.0	74.0	27.0	G 3/8	G 1/8	6.6	0.320	103-557
ISO 3	149.0	64.0	119.0	32.0	18.0	136.0	9.0	64.0	32.0	90.0	27.0	G 1/2	G 1/8	6.6	0.410	103-543

On request: individual bases with NPTF-thread

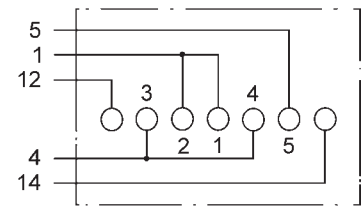


Accessories

Individual Base 3-ported, 2-pos. Function, with Increased Flow Capacity (NC)



Symbol



Dimensions [mm]

Series	A	B	C	D	E	F	G	H	J	K	L	M	N	O
ISO 3	120.0	100.0	64.0	48.0	M8	32.0	64.0	59.5	50.5	G 1/8	5.0	34.0	G 3/4	79.0

Series	P	Q	R	S	T	U	V	Weight approx. [kg]	Order Code
ISO 3	9.0	52.0	92.0	G 1/2	11.0	8.0	20.0	1.065	10.4935

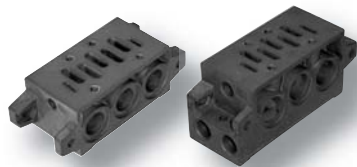
On request: individual bases with NPTF-thread

Without picture: Individual bases

Dimensions [mm]

Symbol	Description	Ports	Length	Width	Height	Weight approx. [kg]	Order Code
	Individual base with increased flow capacity ISO 1 series	"1" + "4" = G 3/8 "5" = G 1/4	110.0	45.0	45.0	0.500	239-357
—	Individual base for poppet valves ISO 3 series	"1", "4" + "5" = G 1/2	120.5	70.0	69.5	1.400	13.7964

Subject to change without notice. Not liable for printing errors

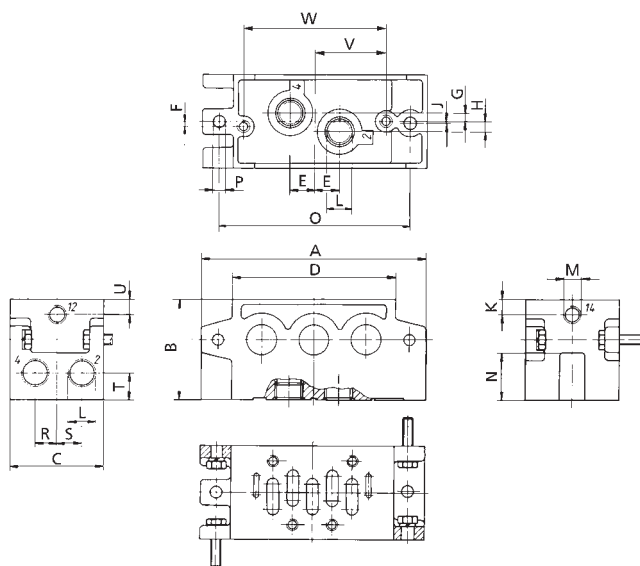


Sub-base Mounted Valves to ISO 5599/1



Accessories

Manifold Block with Side and Bottom Ports



Dimensions [mm]

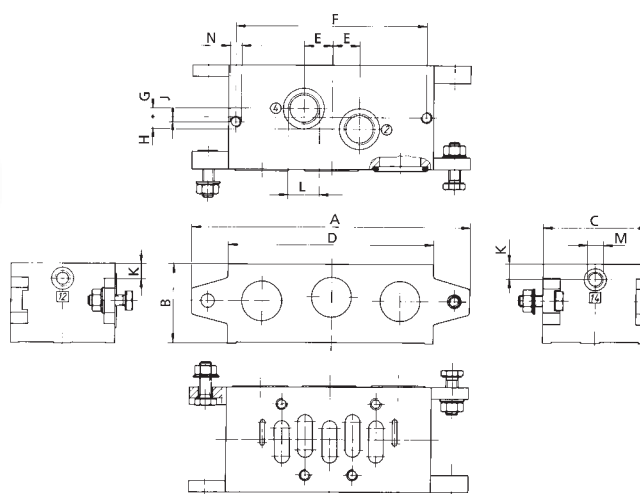
Series	A	B	C	D	E	F	G	H	J	K	L	M	N	O
ISO 1	110.0	50.0	43.0	84.0	13.0	3.0	1.5	7.5	1.2	10.0	G 1/4	G 1/8	23.0	95.0
ISO 2	135.0	60.0	56.0	98.5	15.0	3.0	5.0	6.0	1.0	9.0	G 3/8	G 1/8	28.0	115.0
ISO 3	190.0	66.0	71.0	140.0	19.0	3.0	6.0	8.0	1.3	9.5	G 1/2	G 1/8	32.0	168.0

Series	P	R	S	T	U	V	W	Weight approx. [kg]	Order Code
ISO 1	5.4	9.5	12.0	13.0	10.0	35.5	71.0	0.400	239-241
ISO 2	6.6	13.0	15.0	16.0	9.0	43.0	86.0	0.600	239-245
ISO 3	8.6	16.5	19.0	18.0	9.5	65.0	130.0	1.200	239-249

incl. bolts and gaskets

On request: individual bases with NPTF-thread

Manifold Block Form C to VDMA 24345, with Bottom Ports



Dimensions [mm]

Series	A	B	C	D	E	F	G	H	J	K	L	M	N	Weight approx. [kg]	Order Code
ISO 1	110.0	44.0	43.0	85.0	13.0	71.0	1.5	7.5	3.0	9.0	G 1/4	G 1/8	M5	0.300	239-239
ISO 2	135.0	45.0	56.0	98.5	15.0	86.0	5.0	6.0	3.0	9.0	G 3/8	G 1/8	M6	0.400	239-243
ISO 3	190.0	54.0	71.0	140.0	19.0	130.0	6.0	8.0	3.0	10.0	G 1/2	G 1/8	M8	0.800	239-247

incl. bolts and gaskets

On request: individual bases with NPTF-thread



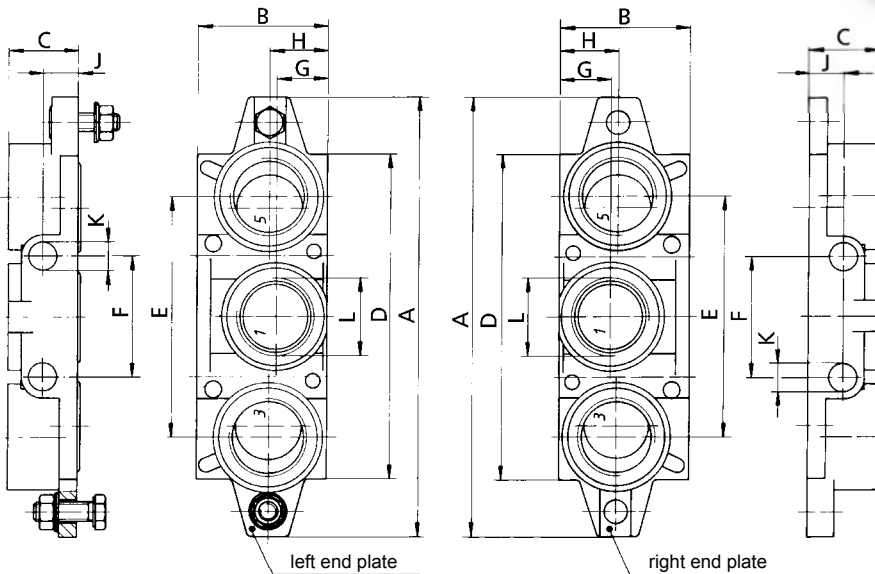
Accessories

Without picture: Manifold blocks

Dimensions [mm]

Symbol	Description	Length	Width	Height	Weight approx. [kg]	Order code
	Manifold block with increased flow capacity ISO 1 series	110.0	43.0	50.0	0.550	239-353
	Manifold block with increased flow capacity (NC) ISO 2 series	135.0	56.0	59.0	1.010	239-902
	Manifold block with increased flow capacity (NC) ISO 3 series	190.0	71.0	74.0	1.700	10.6062
	Manifold block with increased flow capacity ISO 2 series	95.0	50.0	49.5	0.650	10.5070
	Manifold block with port "1" locked (NC) ISO 2 series	190.0	88.0	70.0	2.200	10.6915

End Plate Kits Form D to VDMA 24345



Dimensions [mm]

Series	A	B	C	D	E	F	G	H	J	K	L	Weight approx. [kg]	Order Code
ISO 1	110.0	46.0	22.0	85.0	56.0	28.0	22.0	25.0	11.0	7.0	G 3/8	0.300	239-257
ISO 2	135.0	47.0	26.0	98.5	70.0	35.0	23.0	25.0	13.0	9.0	G 1/2	0.400	239-255
ISO 3	190.0	56.0	30.0	140.0	104.0	52.0	22.0	25.0	15.0	12.0	G 1	0.700	239-259

incl. bolts and gaskets

On request: end plate kits with NPTF-thread

Subject to change without notice. Not liable for printing errors

Valves

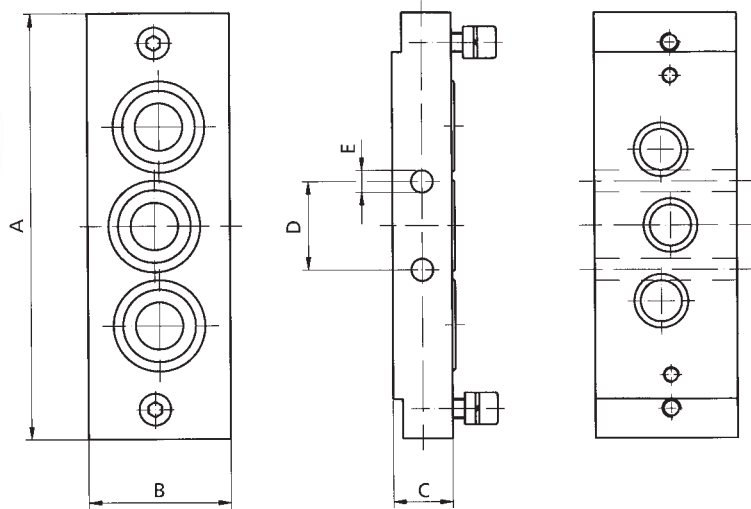


Sub-base Mounted Valves to ISO 5599/1



Accessories

Adapter Plates to Mount the Respective ISO Valves



Dimensions [mm]

ISO-Series Lefthand Side	ISO-Series Righthand Side	A	B	C	D	E	Weight approx. [kg]	Order Code
ISO 1	ISO 2	135.0	45.0	19.0	28.0	7.0	0.900	239-186
ISO 1	ISO 3	190.0	55.0	32.0	28.0	7.0	1.100	239-149
ISO 2	ISO 1	135.0	45.0	19.0	28.0	7.0	0.900	239-181
ISO 2	ISO 3	190.0	55.0	32.0	35.0	9.0	1.100	239-179
ISO 3	ISO 1	190.0	55.0	32.0	28.0	7.0	1.100	239-152
ISO 3	ISO 2	190.0	60.0	40.0	—	—	1.100	239-183

incl. bolts and gaskets

Without picture: Adapter plates

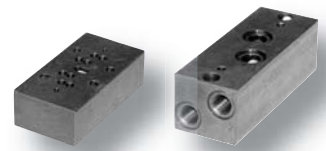
Dimensions [mm]

Symbol	Description	Length	Width	Height	Weight approx. [kg]	Order Code
	Adapter plate with side ports ISO 1 series on ISO 3 series	190.0	55.0	55.0	1.550	239-177
	Adapter plate with G 3/4 ports top and bottom ISO 3 series on ISO 1 series	190.0	55.0	55.0	1.550	10.6394

Without picture: Mid plates

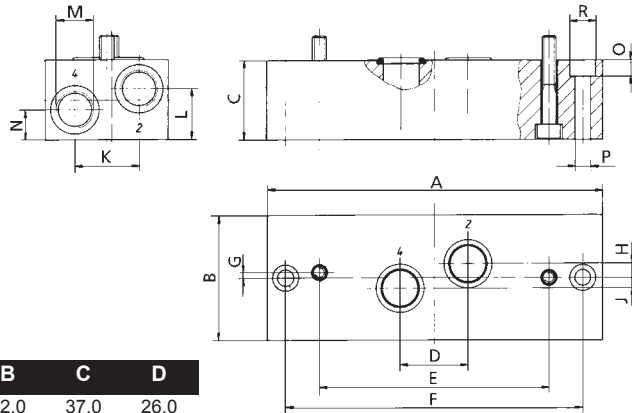
Dimensions [mm]

Symbol	Description	Ports "1" "3" "5"	Length	Width	Height	Weight approx. [kg]	Order Code
	Mid plate ISO 1 series	G 1/4	110.0	29.0	40.0	0.040	10.5239
	Mid plate ISO 2 series	G 3/8	135.0	30.0	50.0	0.500	10.5688
	Mid plate ISO 3 series	G 1/2	190.0	40.0	60.0	1.070	239-182



Accessories

Connector Plate Form E to VDMA 24345, with Side and Bottom Ports



Dimensions [mm]

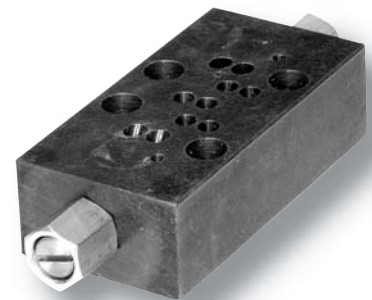
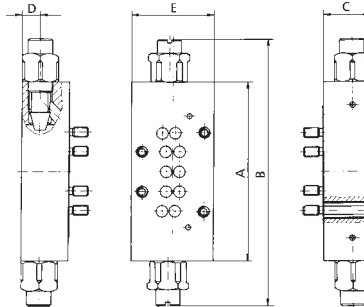
Series	A	B	C	D
ISO 1	110.0	42.0	37.0	26.0
ISO 2	135.0	55.0	40.0	30.0
ISO 3	190.0	70.0	45.0	38.0

Series	E	F	G	H	J	K	L	M	N	O	P	R	Weight approx. [kg]	Order Code
ISO 1	71.0	95.0	3.0	7.5	1.5	22.0	25.0	G 1/4	12.0	5.7	5.5	10.0	0.500	239-143
ISO 2	86.0	115.0	3.0	6.0	5.0	29.0	26.0	G 3/8	14.0	6.8	6.6	11.0	0.800	239-180
ISO 3	130.0	168.0	3.0	8.0	6.0	36.0	29.0	G 1/2	17.0	9.0	9.0	15.0	1.600	239-144

incl. bolts and gaskets

On request: connector plates with NPTF-thread

Sandwich Speed Control

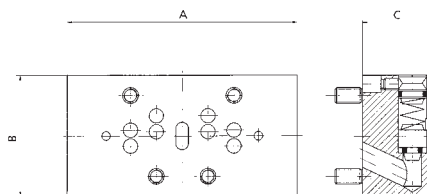
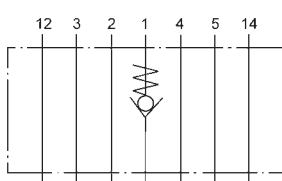


Dimensions [mm]

Series	A	B	C	D	E	Weight approx. [kg]	Order Code
ISO 1	89.0	126.5	24.5	12.5	42.0	0.600	239-321
ISO 2	110.0	169.0	29.5	11.0	50.0	0.700	239-322
ISO 3	128.0	188.0	34.5	14.0	64.0	0.900	239-323

incl. studs and gaskets

Non-Return Plate for Port 1

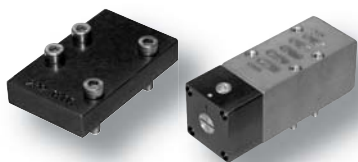


Dimensions [mm]

Series	A	B	C	Weight approx. [kg]	Order Code
ISO 1	80.0	42.0	24.5	0.500	239-324
ISO 2	96.0	50.0	29.5	0.600	239-325
ISO 3	120.0	69.0	38.5	0.700	239-326

incl. studs and gaskets

Subject to change without notice. Not liable for printing errors

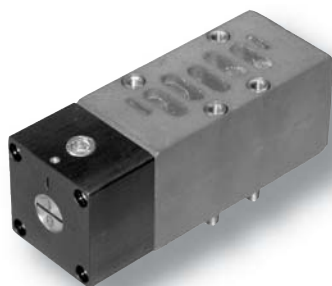
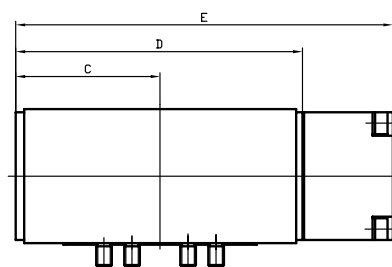
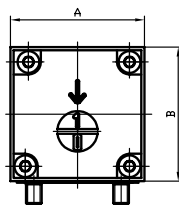
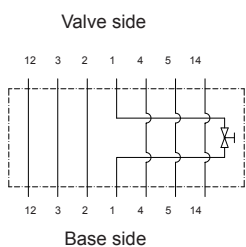


Sub-base Mounted Valves to ISO 5599/1



Accessories

Valve Isolating Plate



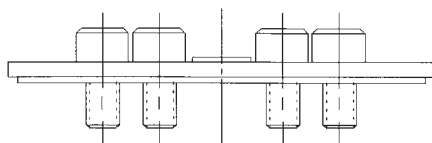
Dimensions [mm]

Serie	Operating pressure	A	B	C	D	E	Weight approx. [kg]	Order Code
ISO 1	vacuum to 10 bar*	42,5	44,3	46,0	111,5	140,3	0,510	239-2248
ISO 2	vacuum to 10 bar*	50,5	44,5	62,5	137,4	166,2	0,650	239-2250
ISO 3	vacuum to 10 bar*	65,5	67,0	67,0	154,0	199,5	1,630	239-2258

*Higher pressures on request.

NEW

Blank Station Plates



Series	Weight approx. [kg]	Order Code
ISO 1	0.100	239-150
ISO 2	0.200	239-178
ISO 3	0.300	239-153

incl. bolts and gaskets

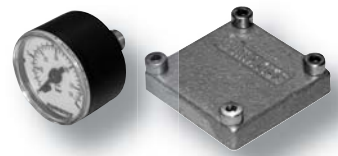
Blocking Disks



Series	Order Code
ISO 1	239-1598*
ISO 2	239-252
ISO 3	239-253

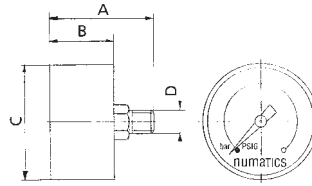
* incl. o-ring

Subject to change without notice. Not liable for printing errors



Accessories

Gauge for Sandwich Pressure Regulator

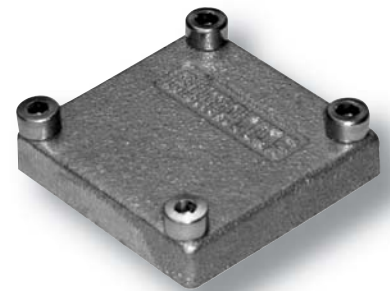


Dimensions [mm]

Pressure Range	A	B	C	D	Weight approx. [kg]	Order Code
0 to 2.5 bar	42.0	26.0	40.0	R 1/8	0.040	214-151
0 to 4 bar	42.0	26.0	40.0	R 1/8	0.040	214-152
0 to 10 bar	42.0	26.0	40.0	R 1/8	0.040	214-153
0 to 16 bar	42.0	26.0	40.0	R 1/8	0.040	214-154

On request: other pressure ranges

Jumper Plates for Sandwich Pressure Regulator "RD/ND"



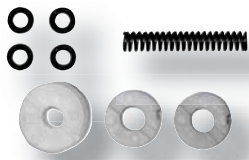
Description	Series	Weight approx. [kg]	Order Code
Jumper plate option "16P" or "16N"	ISO 1+ISO 2	0.035	239-363
Jumper plate option "16P" or "16N"	ISO 3	0.105	239-364

incl. bolts and gaskets

Without picture: Jumper plates to Mount on Sandwich Pressure Regulator

Symbol	Description	Length	Width	Height	Weight approx. [kg]	Order Code
	Jumper plate, connecting "1" to "2" and "4"	74.0	42.0	10.0	0.100	10.5267
	ISO 1 series					
	Jumper plate, connecting "1" to "2" and "4"	90.0	50.0	10.0	0.130	10.6118
	ISO 2 series					
	Jumper plate, connecting "1" to "2" and "4"	120.0	66.0	10.0	0.244	10.5826
	ISO 3 series					
	Jumper plate, connecting "2" to "3" and "4" to "5"	65.0	40.0	12.0	0.100	10.6847
	ISO 1 series					
	Jumper plate, connecting "2" to "3" and "4" to "5"	120.0	66.0	10.0	0.244	10.6065
	ISO 3 series					

Subject to change without notice. Not liable for printing errors

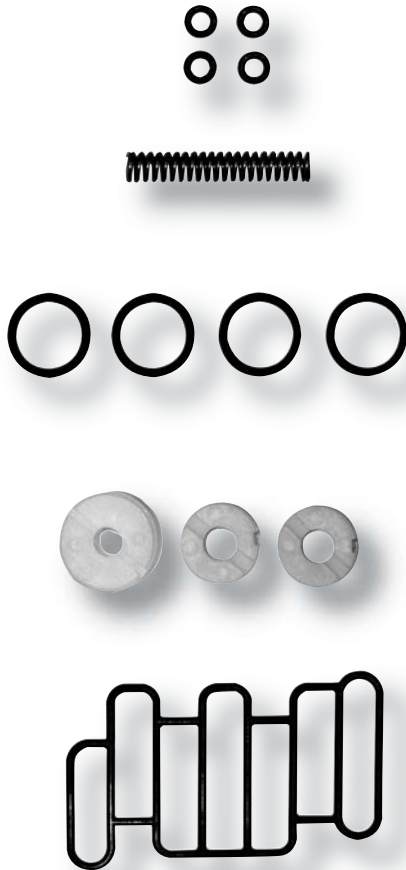


Sub-base Mounted Valves to ISO 5599/1



Accessories

Spare Part Kits for Valves



ISO 1; ISO 2 and ISO 3 Series

Valve-Type	Order Code		
	ISO 1	ISO 2	ISO 3
BA4.. / ZA4.. PA4.. / JA4..	I1B-K1	I2B-K1	I3B-K1
BB4.. / ZZ4.. PP4.. / JJ4..	I1B-K2	I2B-K2	I3B-K2
BB5 / 6 / 7.. / ZZ5 / 6 / 7.. PP5 / 6 / 7.. / JJ5 / 6 / 7..	I1B-K3	I2B-K3	I3B-K3
BW4.. / ZW4..	I1B-K4	I2B-K4	I3B-K4
SA4..	I1S-K1	I2S-K1	I3S-K1
SS4..	I1S-K2	I2S-K2	I3S-K2
SS5 / 6 / 7..	I1S-K3	I2S-K3	I3S-K3
incl. Gasket, O-Rings, Spring or Bumper			

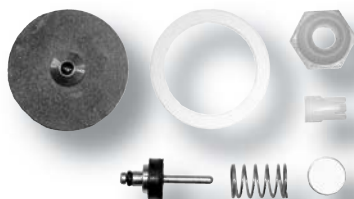
ISO 1; ISO 2 and ISO 3 Compact Series

Valve-Type	Order Code		
	ISO 1	ISO 2	ISO 3
BA4.. / ZA4.. PA4..	C1B-K1	C2B-K1	C3B-K1
BB4.. / ZZ4.. / PP4..	C1B-K2	C2B-K2	C3B-K2
BB5 / 6 / 7.. / ZZ5 / 6 / 7.. PP5 / 6 / 7..	C1B-K3	C2B-K3	C3B-K3
BW4.. / ZW4..	C1B-K4		
incl. Gasket, O-Rings, Spring or Bumper			

Poppet Valves Series ISO 3

Valve Type	Order Code Series ISO 3
G34B....	G3B-K1
G34P....	G3P-K1
incl. O-Rings, gaskets, spring	

Spare Part Kits for Regulators



Regulator ISO 1 / ISO 2 / ISO 3

Regulator Type	Order Code		
	ISO 1	ISO 2	ISO 3
RS.. / RD..	229-640	229-640	239-2277
NS.. / ND..	—	—	239-2259



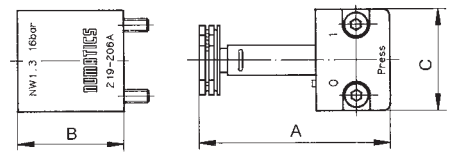
Accessories

Pilot Systems

Dimensions [mm]

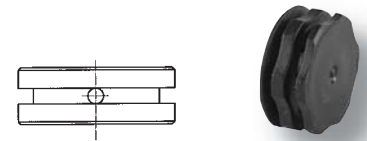
Type	A	B	C	Weight approx. [kg]	Order Code
10 bar, without manual override	59.0	32.0	30.0	0.063	219-216
10 bar, non-locking manual override	59.0	32.0	30.0	0.063	219-217
10 bar, manual override push/locking	59.0	32.0	30.0	0.063	219-218
16 bar*, without manual override	59.0	32.0	30.0	0.063	219-219
16 bar*, non-locking manual override	59.0	32.0	30.0	0.063	219-220
16 bar*, manual override push/locking	59.0	32.0	30.0	0.063	219-221
16 bar*, non-locking manual override 3-port., 2-pos. function NO	59.0	32.0	30.0	0.063	219-489

* only available with 16 bar solenoid



Exhaust Protection Screw

Description	Weight approx. [gr]	Order Code
Exhaust protection screw for valve system	1.850	125-1027

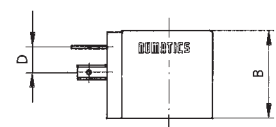
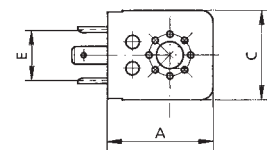


Plug-in Solenoids for Connector Sockets to DIN 43650, Form A, Type 30 mm

Dimensions [mm]

Voltage	A	B	C	D	E	Weight approx. [kg]	Order Code
10 bar, 2.7 W 24 VDC	35.5	30.0	30.0	9.0	18.8	0.10	225-354
10 bar, 5.2/3.9 VA 24 VAC, 50-60 Hz	35.5	30.0	30.0	9.0	18.8	0.10	228-772
10 bar, 4.8/3.6 VA 110 VAC, 50-60 Hz and 42/48/60 VDC, 2.5/3.4/5.3 W	35.5	30.0	30.0	9.0	18.8	0.10	228-773
10 bar, 4.9/3.7 VA 230 VAC, 50-60 Hz and 110 VDC, 3.9 W	35.5	30.0	30.0	9.0	18.8	0.10	228-774
16 bar*, 6.8 W 24 VDC and 48/42-V, 50-60 Hz, 9.9/7.1 VA	35.5	30.0	30.0	9.0	18.8	0.10	225-355
16 bar*, 10.8/7.6 VA 24 VAC, 50-60 Hz and 12 VDC, 7.8 W	35.5	30.0	30.0	9.0	18.8	0.10	228-775
16 bar*, 10.5/7.6 VA 110 VAC, 50-60 Hz and 48/60 VDC, 5.3/8.3 W	35.5	30.0	30.0	9.0	18.8	0.10	228-776
16 bar*, 10.5/7.6 VA 230 VAC, 50-60 Hz and 110 VDC, 6.3 W	35.5	30.0	30.0	9.0	18.8	0.10	228-777

* only available with 16 bar pilot system



Subject to change without notice. Not liable for printing errors

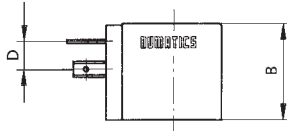
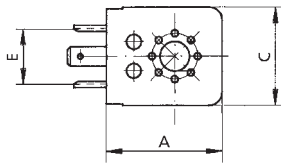


Sub-base Mounted Valves to ISO 5599/1



Accessories

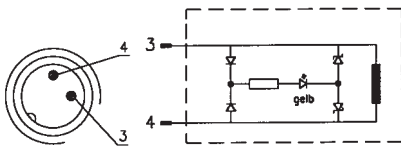
Solenoids to DIN EN 175301-803 (before DIN 43650) Form A, with UL- and CSA-Approval, Type 30 mm



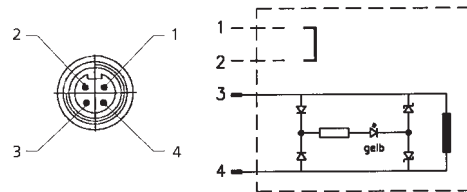
Dimensions [mm]

Voltage	A	B	C	D	E	Weight approx. [kg]	Order Code
10 bar, 2.7 W ; 24 VDC	35.5	30.0	30.0	9.0	18.8	0.10	225-480
10 bar, 4.9/3.6 VA; 110 VAC, 50-60 Hz	35.5	30.0	30.0	9.0	18.8	0.10	228-792

Solenoids to ISO 20401 with M12 Connector and LED or M12 DESINA Standard Connector and LED, Type 30 mm



2 Pin M12 Connector with LED



4 Pin M12 DESINA Standard connector with LED

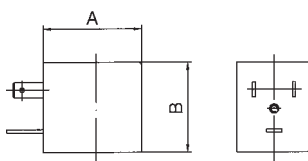


Dimensions [mm]

Description	Voltage	A	B	C	D	Weight approx. [kg]	Order Code
M12 connector with LED, 2 pins	10 bar, 24 VDC, 2.7 W	38.4	29.5	30.0	M12x1	0.110	225-485
M12 connector with LED, 2 pins	16 bar*, 24 VDC, 6.8W	38.4	29.5	30.0	M12x1	0.110	225-486
M12 connector DESINA standard, 4 pins	10 bar, 24 VDC, 2.7 W	38.4	29.5	30.0	M12x1	0.110	225-483
M12 connector DESINA standard, 4 pins	16 bar*, 24 VDC, 6.8 W	38.4	29.5	30.0	M12x1	0.110	225-484

* only available with 16 bar 3-port, 2-pos. function NO pilot system

Solenoids to Industrial Standard, Type 22 mm



Dimensions [mm]

Voltage	A	B	C	Weight approx. [kg]	Order Code
10 bar, 24 VDC, 4.8 W	28.8	29.5	22.0	0.054	225-479
10 bar, 24 VAC, 50-60 Hz; 8.5/6.9 VA	28.8	29.5	22.0	0.054	228-794
10 bar, 110 VAC, 50-60 Hz; 8.5/6.9 VA	28.8	29.5	22.0	0.054	228-791
10 bar, 230 VAC, 50-60 Hz; 8.5/6.9 VA	28.8	29.5	22.0	0.054	228-790

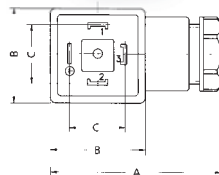


Accessories

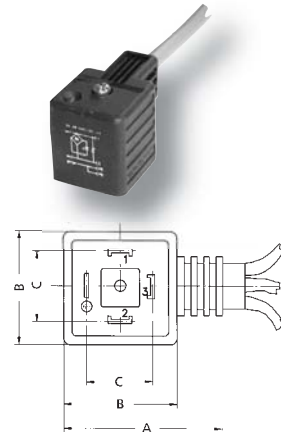
Connector Sockets to DIN EN 175301-803 (before DIN 43650) Form A



with PG 9 screw fitting cable
for cable with
Ø 6 to 8 mm



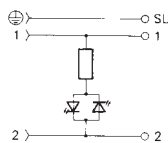
with 2-m-cable



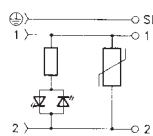
Technical Data and Dimensions [mm]

Nominal Voltage	Wiring Type	Diagram	Colour	Peak Cut-off Voltage	A	B	C	Weight approx. [kg]	Order Code
With PG 9 screw fitting cable									
Up to 250 V	—	—	grey	unlimited	49.0	28.0	18.0	0.02	230-592
Up to 250 V	—	—	black	unlimited	49.0	28.0	18.0	0.02	230-593
10-50 V	LED red	a	transparent	unlimited	49.0	28.0	18.0	0.02	230-582
10-30 V	LED red + Varistor	b	transparent	65 V	49.0	28.0	18.0	0.02	230-567
70-250 V	LED red	a	transparent	unlimited	49.0	28.0	18.0	0.02	230-584
70-250 V	LED red + Varistor	b	transparent	440 V	49.0	28.0	18.0	0.02	230-585
10-30 V	LED green + Varistor	b	transparent	65 V	49.0	28.0	18.0	0.02	230-587
10-50 V	LED green	a	transparent	unlimited	49.0	28.0	18.0	0.02	230-586
70-250 V	LED green	a	transparent	unlimited	49.0	28.0	18.0	0.02	230-588
70-250 V	LED green + Varistor	b	transparent	440 V	49.0	28.0	18.0	0.02	230-589
With 2-m-cable									
Up to 250 V	—	—	black	unlimited	44.0	27.5	18.0	0.20	230-412
24 V	LED yellow + Varistor	b	black	65 V	44.0	27.5	18.0	0.20	230-413
110 V	LED yellow + Varistor	c	black	260 V	44.0	27.5	18.0	0.20	230-414
220 V	LED yellow + Varistor	c	black	470 V	44.0	27.5	18.0	0.20	230-415

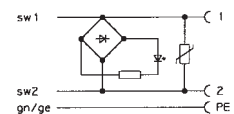
Circuit diagram „a“



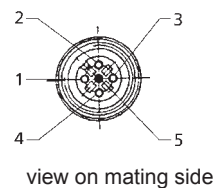
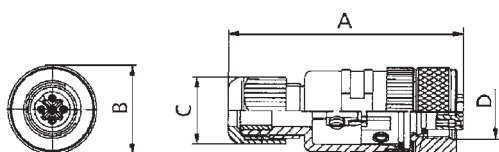
Circuit diagram „b“



Circuit diagram „c“



M12 Straight Female Connector



Dimensions [mm]

Description	A	B	C	D	Weight approx. [kg]	Order Code
M12 straight 5 pin female connector, without cable	52.5	20.0	SW19	M12x1	0.033	230-957

Subject to change without notice. Not liable for printing errors

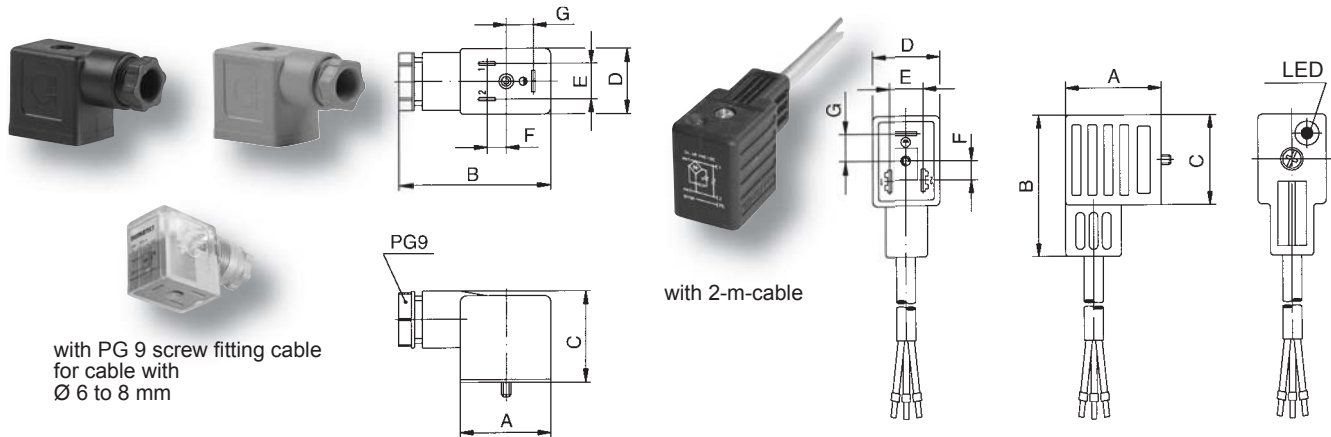


Sub-base Mounted Valves to ISO 5599/1



Accessories

Connector Sockets, Type 22 mm, Industrial Standard



with PG 9 screw fitting cable
for cable with
Ø 6 to 8 mm

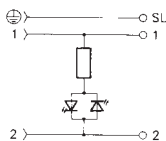
with 2-m-cable

Technical Data and Dimensions [mm]

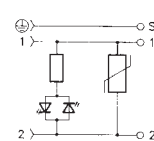
Nominal Voltage	Wiring Type	Colour Diagram	Peak cut-off Voltage	A	B	C	D	E	F	Weight approx. [kg]	Order Code	
With PG 9 screw fitting cable												
Up to 250 V	—	—	grey	unlimited	49.0	21.5	27.0	6.0	8.5	11.0	0.020	230-363
Up to 250 V	—	—	black	unlimited	49.0	21.5	27.0	6.0	8.5	11.0	0.020	230-364
10-50 V	LED red	a	transparent	unlimited	49.0	21.5	27.0	6.0	8.5	11.0	0.020	230-391
10-30 V	LED red + Varistor	b	transparent	65 V	49.0	21.5	27.0	6.0	8.5	11.0	0.020	230-392
70-250 V	LED red	a	transparent	unlimited	49.0	21.5	27.0	6.0	8.5	11.0	0.020	230-393
70-250 V	LED red + Varistor	b	transparent	440 V	49.0	21.5	27.0	6.0	8.5	11.0	0.020	230-394
10-30 V	LED green + Varistor	b	transparent	65 V	49.0	21.5	27.0	6.0	8.5	11.0	0.020	230-400
10-50 V	LED green	a	transparent	unlimited	49.0	21.5	27.0	6.0	8.5	11.0	0.020	230-401
70-250 V	LED green	a	transparent	unlimited	49.0	21.5	27.0	6.0	8.5	11.0	0.020	230-402
70-250 V	LED green + Varistor	b	transparent	440 V	49.0	21.5	27.0	6.0	8.5	11.0	0.020	230-403
With 2-m-cable												
Up to 250 V	—	—	black	unlimited	44.0	21.5	28.0	6.0	8.5	11.0	0.020	230-408
24 V	LED yellow + Varistor	b	black	65 V	44.0	21.5	28.0	6.0	8.5	11.0	0.020	230-409-xxm
110 V	LED yellow + Varistor	b	black	260 V	44.0	21.5	28.0	6.0	8.5	11.0	0.020	230-410
220 V	LED yellow + Varistor	b	black	470 V	44.0	21.5	28.0	6.0	8.5	11.0	0.020	230-411

xxm = add the required cable length in m (e. g. 230-409-05m), standard lengths: 2, 5 and 10 m

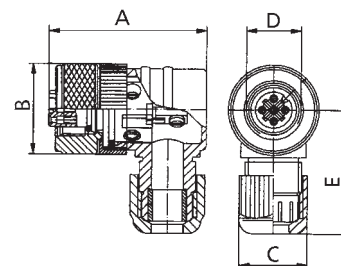
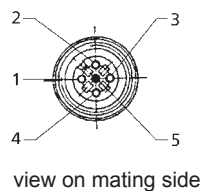
Circuit diagram „a“



Circuit diagram „b“



M12 Elbow Female Connector



Dimensions [mm]

Description	A	B	C	D	E	Weight approx. [kg]	Order Code
M12 elbow 5 pin female connector, without cable	35.0	20.0	SW19	M12x1	27.5	0.025	230-956