

**30 SERIES
POWER UNIT
D & 10 SERIES**

30 SERIES POWER UNIT



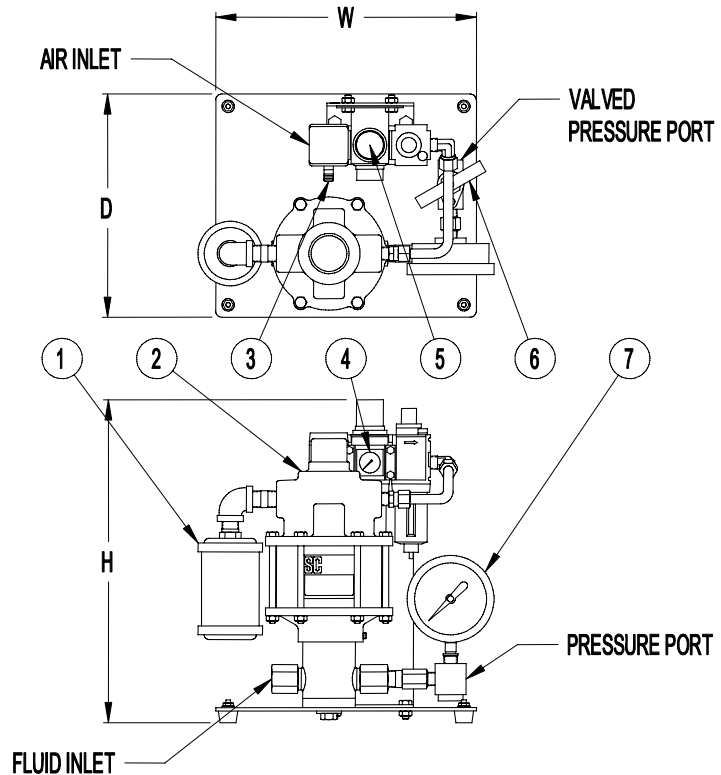
The most compact power unit available within the 10 Series pumps. SC Hydraulic engineers the 30 Series so as to minimize the space required by the unit. Light weight, easy to install.

Only three connections are required; air, fluid supply, and work port. The unit has two pressure ports, one equipped with a shut-off or bleed valve, which provides for ease of operation. An air exhaust muffler is included for quiet operation.

A stainless steel liquid filled gauge is included on units rated up to 30,000 psi and are optional for higher pressure systems.

UNIT CONSISTS OF

- (1) Air exhaust muffler
- (2) SC air operated pump
- (3) Air shut-off valve
- (4) Air pressure gauge
- (5) Filter-regulator (lubricator if required)
- (6) Fluid bleed valve
- (7) High pressure gauge (optional on models rated 30,000 psi and up)



30 SERIES POWER UNIT

30-4 Series 9 models – hydraulic pressure up to 22,000 psi
30-5 Series 15 models – hydraulic pressure up to 42,500 psi
30-6 Series 11 models – hydraulic pressure up to 65,000 psi

Model No. Standard	10 Series Hyd Section Code	D Series Hyd Section Code (Ratio)	Gauge Pressure	Overall Dimensions (in)			Ports NPT/High Pressure		
				W	D	H	Air Drive	Inlet	Outlet
30-4 Series	003	(5:1)	0-1,000	10.50	9.00	13.00	1/4"	1/2"	3/8"
	005	(10:1)	0-2,000					3/8"	1/4"
	010	(15:1)	0-3,000						
	015, 020	(30:1, 35:1)	0-6,000						
	030	(55:1)	0-10,000						
	050	(100:1)	0-15,000						
	080	(140:1)	0-20,000						
125	(220:1)	0-30,000							
30-5 or 30-D5 Series	005, 007	10, 12	0-2,000	12.00	12.00	18.00	1/2"	1"	1/2"
	010	20	0-3,000					1/2"	3/8"
	015	25	0-5,000						
	018, 020	30, 35	0-6,000						
	030, 040	55, 70	0-10,000						
	045	85	0-15,000					3/8"	1/4"
	060	105	0-15,000						
	080	140	0-20,000						
	080-HF4	140-HF4	0-20,000						
	100	195	0-30,000						
	100-HF4	195-HF4	0-30,000						
	160	280	0-30,000						
	160-HF4	280-HF4	0-30,000						
	250	440	No Gauge						
	250-HF4	440-HF4	No Gauge						
350-HF4	555-HF4	No Gauge							
30-6 or 30-D6 Series	010	20	0-3000	12.00	12.00	21.00	1/2"	1"	1/2"
	015, 020	25, 35	0-6000					1/2"	3/8"
	030	55	0-10,000						
	050	95	0-15,000						
	080	145	0-20,000					3/8"	1/4"
	100	180	0-30,000						
	151	240	0-30,000						
	151-HF4	240	0-30,000						
	201	330	No Gauge **						
	201-HF4	330-HF4	No Gauge **						
	301-HF4	460-HF4	No Gauge **						
	402-HF4	740-HF4	No Gauge **						

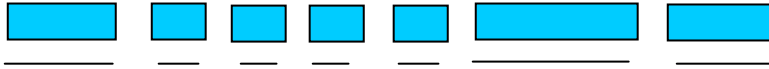
* Coned and threaded high-pressure connection for 1/4" O.D. tubing.

** Consult Factory if gauge is desired

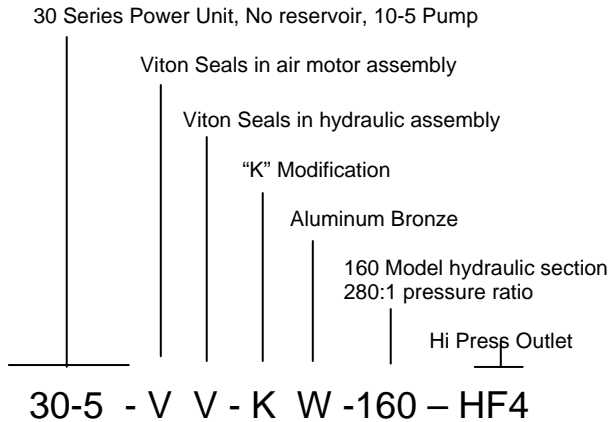
HOW TO ORDER TABLE

30, 40, 50, 60 SERIES POWER UNITS

For pump selection see individual pump information



Example #1 Power Unit Selection



Example #2 Power Unit Selection

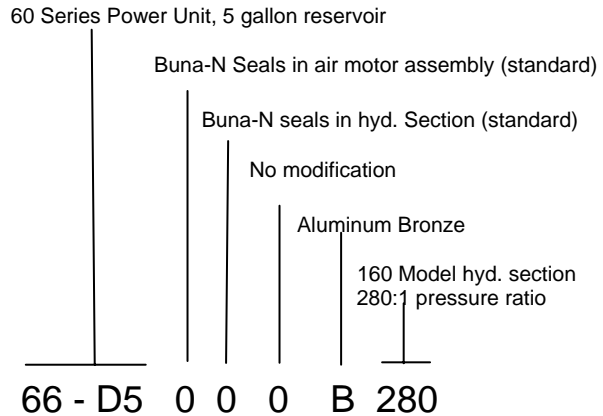


TABLE 1 ⁽⁴⁾ Power Unit Designation

3	30 Series
4	40 Series
5	50 Series
6	60 Series

TABLE 2 Reservoir Option

0	No reservoir (30, 40 only)
2	Two gallon (40 only)
3	Tree gallon (40 only)
6	Five gallon (60 only)
7	Ten gallon (60 only)

TABLE 3 Pump Series Designation

4	10-4 Series
D5	D5 Dry Lube (standard)
5	10-5 (old style)
D6	D6 Dry Lube (standard)
6	10-6 (old style)

TABLE 4 Seal Compound – Air Motor

0	Buna-N Nitrile (standard)
V	Viton

TABLE 5 Seal Compound – Hyd. Section

0	Buna-N nitrile (standard)
E	EPR - ethylene propylene
V	Fluorocarbon
*	Consult factory for special compounds

TABLE 6 Modifications

0	Standard pump
A	“A” modification
B	Bottom inlet ⁽¹⁾

TABLE 6 ⁽⁵⁾ Modifications (continued)

D	Bottom inlet – heavy duty
E	Bottom inlet – “A” modification ⁽¹⁾
G	Isolator – heavy duty ^(1,3)
H	Heavy duty ⁽¹⁾
J	Bottom inlet – “K” modification ⁽¹⁾
K	“K” modification ⁽¹⁾
M	Bottom inlet – “A” and “K” modification ⁽¹⁾
N	Isolator – “A” modification ⁽¹⁾
P	Isolator – “K” modification ⁽¹⁾
Q	Isolator – “A” and “K” modification ⁽¹⁾
R	Isolator ⁽¹⁾
S	Heavy duty – “K” modification ^(1,3)
U	Heavy duty – bottom inlet – “K” mod. ^(1,3)
V	Heavy duty – isolator – “K” modification ^(1,3)

TABLE 7 Material of Construction – Hyd. Section

W	Aluminum bronze & stainless steel (10-4, 10-5, 10-6 Series) standard
B	Aluminum bronze & stainless steel (D5, D6 Series) standard
S	All stainless steel
C	Cad plate carbon steel, stainless steel ⁽²⁾

TABLE 8 Model designation –Pressure ratio

Refer to pressure ratio charts for proper selection

TABLE 9 Port option

Blank	Standard
SAE	Straight thread as indicated on chart
HF4	9/16-18 x ¼” OD tube 60K psi

Notes:

- (1) Not available for 10-4 Series
- (2) 25 piece minimum order
- (3) “A” modification included with all “H” modifications.
- (4) Do not fill gap on a two digit description. Refer to Example #2
- (5) If digit from Table 1 is “6” this letter must be “B”, “D”, “E”, “J”, “M”, or “U”,