

**50 SERIES
POWER UNIT
D & 10 SERIES**

50 SERIES POWER UNIT



The 50 Series is a self-contained unit complete with a three gallon pressurized reservoir, hydraulic pressure unloading valve, air sequence valve and manual air control valve. It is designed for oil service only.

This unit provides high-speed low-pressure operation and low-speed high-pressure operation automatically.

Only two positions of the control valve are required for a complete cycle of operation. When the control valve is shifted (see circuit below), air pressure is applied to

the reservoir. This pressurization initiates free flow through the pump, thus providing the high-speed, low-pressure cycle.

Upon reaching a set hydraulic output pressure, the sequence valve automatically operates the pump, thus providing the low speed high-pressure cycle.

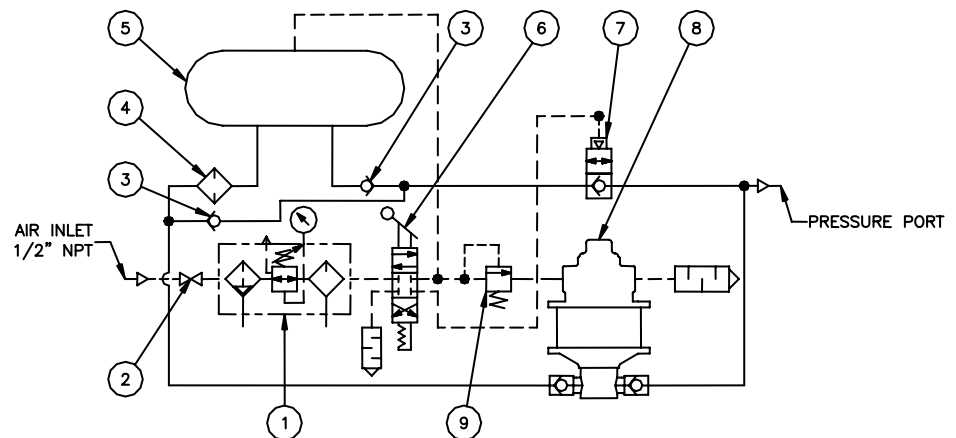
Operation of the pump only when increased pressure is required saves air, assures maximum pump life. And reduces operating and maintenance costs.

Opposite position of the control valve activates the pressure unloading valve and dumps system pressure back to the reservoir.

Design of the unit permits the use of the air supply for return cycle if needed. The unit is easily converted for semi or fully automatic operation.

LEGEND

- (1) Air controls
- (2) Air shut-off valve
- (3) Check valve
- (4) Fluid filter
- (5) Reservoir
- (6) Manual 4-way valve
- (7) Pressure unloading valve
- (8) SC pump
- (9) Air sequence valve

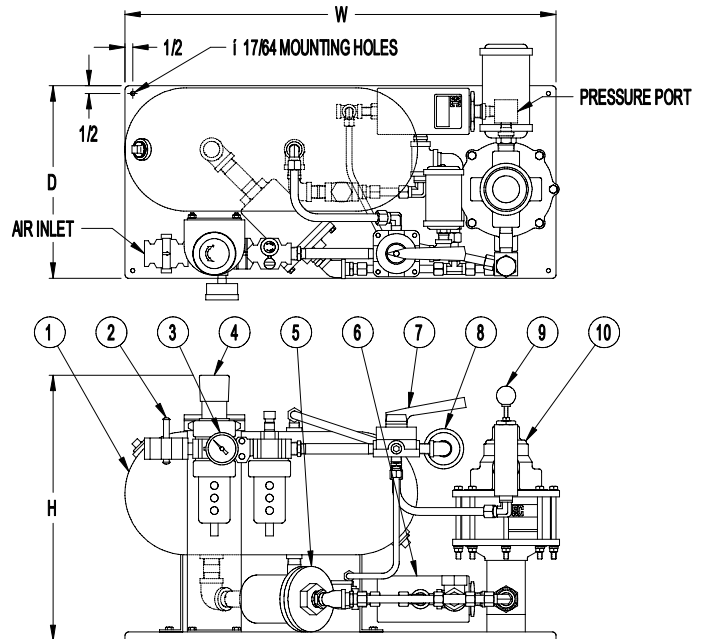


50 SERIES POWER UNIT

NOTE: For Oil Service Only

UNIT CONSISTS OF

- (1) Reservoir
- (2) Air shut-off valve
- (3) Air pressure gauge
- (4) Air controls
- (5) Fluid filter
- (6) Pressure unloading valve
- (7) Manual 4-way valve
- (8) Air exhaust muffler
- (9) Air sequence valve
- (10) SC air operated pump

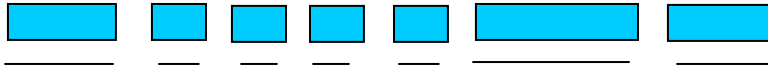


Model No. Standard	10 Series Hyd Section Code	D Series Hyd Section Code (Ratio)	Overall Dimensions (in)			Ports NPT		Unloading Valve Model
			W	D	H	Air Drive	Pressure	
50-5 or 50-D5 Series	005, 007	10, 12	25.00	12.50	16.50	1/2"	1/2"	PRC-100-N-050
	010	20					3/8"	
	015	25						
	018, 020	30, 35						
	030, 040	55, 70						
	045	85					1/4"	PRC-200-N-050
	060	105						
	080-HF4	140-HF4						
	100	195						
	100-HF4	195-HF4						
	160	280						
160-HF4	280-HF4							
50-6 or 50-D6 Series	010	20	28.00	12.5	19.44	1/2"	1/2"	PRC-100-N-050
	015, 020	25, 35					3/8"	
	030	55						
	050	95					1/4"	PRC-200-N-050
	080	145						
	100	180						
	151	240						
151-HF4	240-HF4	PRC-300-N-HF9						

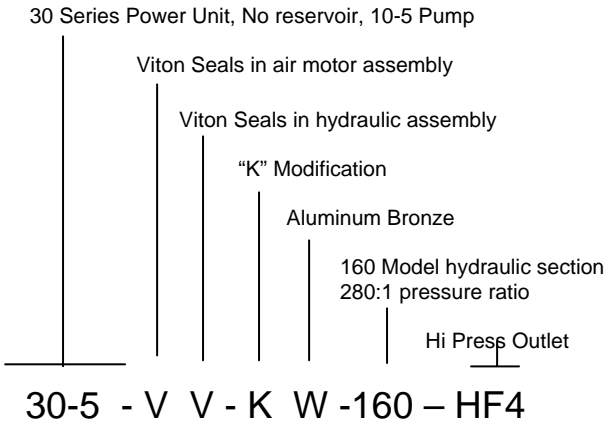
HOW TO ORDER TABLE

30, 40, 50, 60 SERIES POWER UNITS

For pump selection see individual pump information



Example #1 Power Unit Selection



Example #2 Power Unit Selection

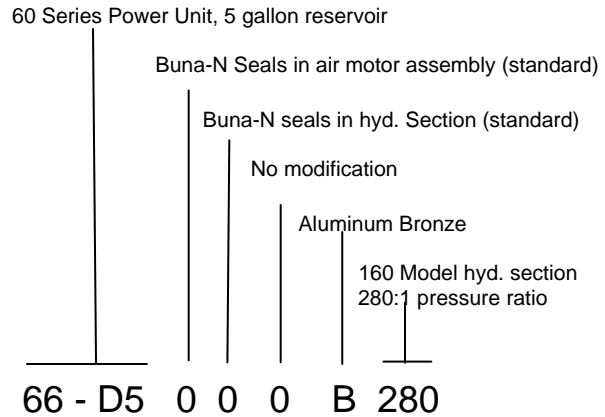


TABLE 1 ⁽⁴⁾ Power Unit Designation

3	30 Series
4	40 Series
5	50 Series
6	60 Series

TABLE 2 Reservoir Option

0	No reservoir (30, 40 only)
2	Two gallon (40 only)
3	Tree gallon (40 only)
6	Five gallon (60 only)
7	Ten gallon (60 only)

TABLE 3 Pump Series Designation

4	10-4 Series
D5	D5 Dry Lube (standard)
5	10-5 (old style)
D6	D6 Dry Lube (standard)
6	10-6 (old style)

TABLE 4 Seal Compound – Air Motor

0	Buna-N Nitrile (standard)
V	Viton

TABLE 5 Seal Compound – Hyd. Section

0	Buna-N nitrile (standard)
E	EPR - ethylene propylene
V	Fluorocarbon
*	Consult factory for special compounds

TABLE 6 Modifications

0	Standard pump
A	"A" modification
B	Bottom inlet ⁽¹⁾

TABLE 6 ⁽⁵⁾ Modifications (continued)

D	Bottom inlet – heavy duty
E	Bottom inlet – "A" modification ⁽¹⁾
G	Isolator – heavy duty ^(1,3)
H	Heavy duty ⁽¹⁾
J	Bottom inlet – "K" modification ⁽¹⁾
K	"K" modification ⁽¹⁾
M	Bottom inlet – "A" and "K" modification ⁽¹⁾
N	Isolator – "A" modification ⁽¹⁾
P	Isolator – "K" modification ⁽¹⁾
Q	Isolator – "A" and "K" modification ⁽¹⁾
R	Isolator ⁽¹⁾
S	Heavy duty – "K" modification ^(1,3)
U	Heavy duty – bottom inlet – "K" mod. ^(1,3)
V	Heavy duty – isolator – "K" modification ^(1,3)

TABLE 7 Material of Construction – Hyd. Section

W	Aluminum bronze & stainless steel (10-4, 10-5, 10-6 Series) standard
B	Aluminum bronze & stainless steel (D5, D6 Series) standard
S	All stainless steel
C	Cad plate carbon steel, stainless steel ⁽²⁾

TABLE 8 Model designation – Pressure ratio

Refer to pressure ratio charts for proper selection

TABLE 9 Port option

Blank	Standard
SAE	Straight thread as indicated on chart
HF4	9/16-18 x 1/4" OD tube 60K psi

Notes:

- (1) Not available for 10-4 Series
- (2) 25 piece minimum order
- (3) "A" modification included with all "H" modifications.
- (4) Do not fill gap on a two digit description. Refer to Example #2
- (5) If digit from Table 1 is "6" this letter must be "B", "D", "E", "J", "M", or "U",