

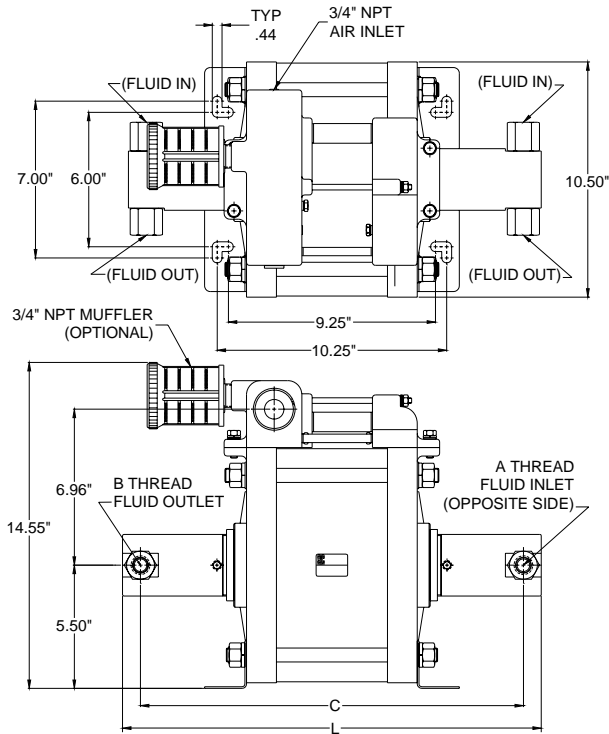
**L10 SERIES  
AIR OPERATED  
DOUBLE-ACTING  
PUMPS**

# L10 SERIES

## Double Acting Liquid Pump

### APPLICATIONS

- Sub-sea valve actuation
- Safety shut down valves
- Wire-line control systems
- Blow out preventer control systems
- Bolt tensioning
- Pressure testing
- Sub-surface control systems
- Flushing rigs



Mounting Dimensions in Inches

Dash Number	Actual Ratio	Max Pressure psig	Displacement Per Cycle Cu. In.	Connection Ports NPT		C	L
				A Inlet	B Outlet		
-33	32.6	3,500	16.84	1"	1"	17.22	19.19
-66	64.0	7,500	8.59	1/2"	1/2"	17.10	18.70
-114	113.9	12,000	4.83	1/2"	1/2"	16.72	18.18
-177	177.8	20,000	3.09	1/2"	13/16-16*	17.14	18.61
-256	256	30,000	2.15	1/2"	1 1/8-12**	16.92	18.38

\*Coned and Threaded High Pressure Connection for 20 KSI 9/16" O.D. Tubing  
 \*\*Coned and Threaded High Pressure Connection for 30 or 60 KSI 9/16" O.D. Tubing

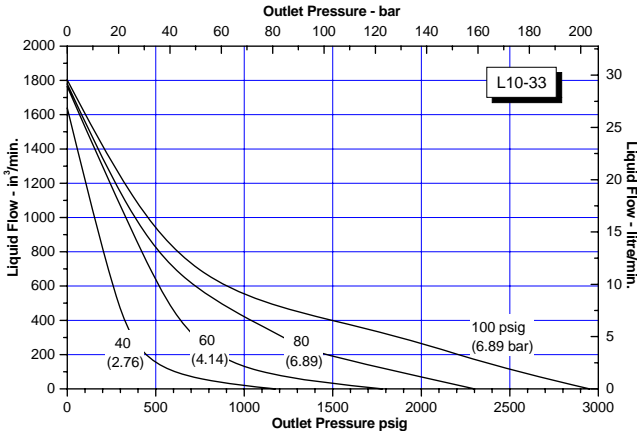
### Wetted Materials of Construction

L10 standard Model	Hydraulic Plunger and/or Piston	Hydraulic Cylinder	Non-Metalic Parts	Inlet & Outlet Metallic Parts
L10-33	316 SS Chrome Plated	17-4 SS	Buna-N Ryton	316 SS 17-4 SS
L10-66	316 SS Chrome Plated	17-4 SS	UHMWP, Viton PTFE	17-4 SS 316 SS
L10-114	316 SS Chrome Plated	17-4 SS	UHMWP, Viton PTFE	17-4 SS 316 SS
L10-177	316 SS Chrome Plated	17-4 SS	UHMWP Viton PTFE	17-4 SS 316 SS
L10-256	17-4 SS Chrome Plated	17-4 SS	UHMWP, Viton PTFE	17-4 SS 316 SS

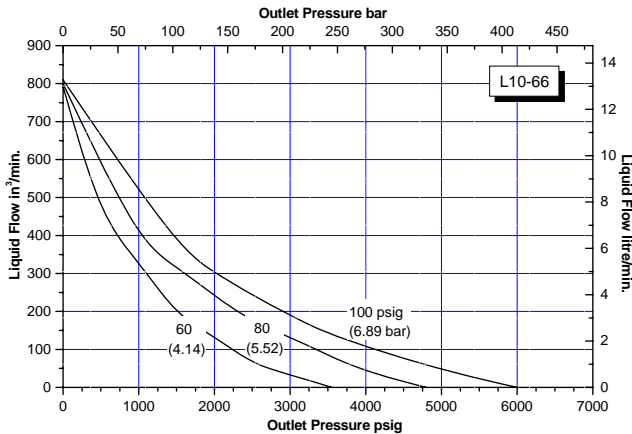
# L10 SERIES

## Double Acting Liquid Pump

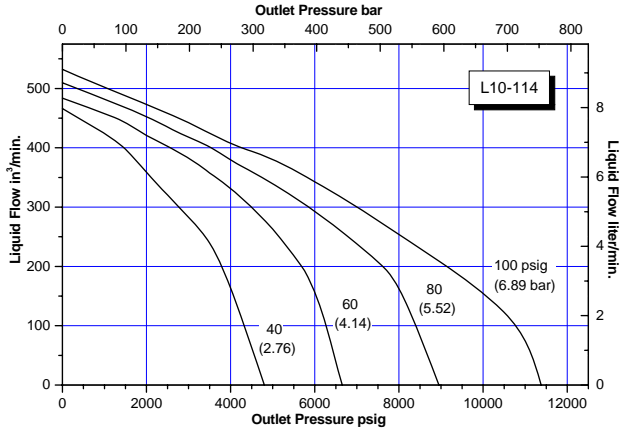
L10-33



L10-66



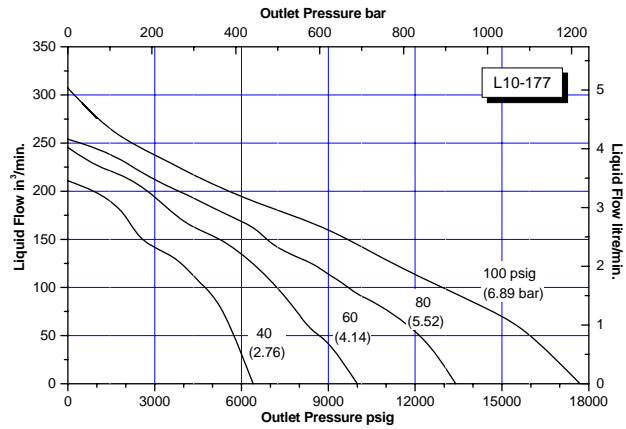
L10-114



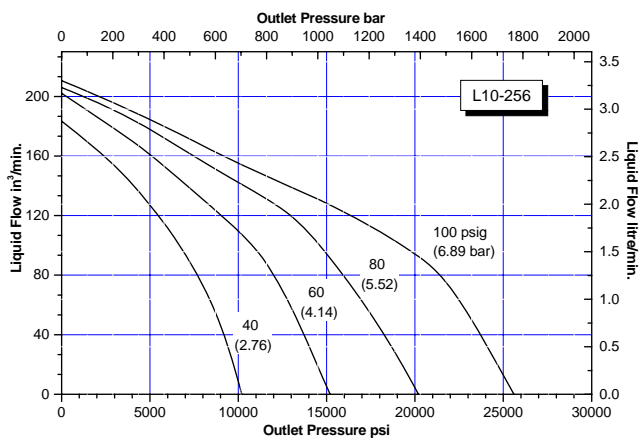
# L10 SERIES

## Double Acting Liquid Pump

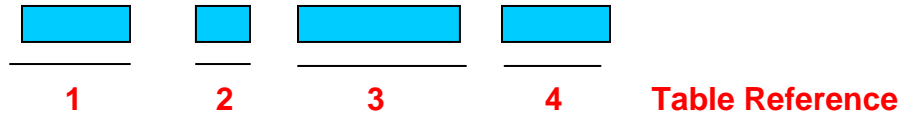
L10-177



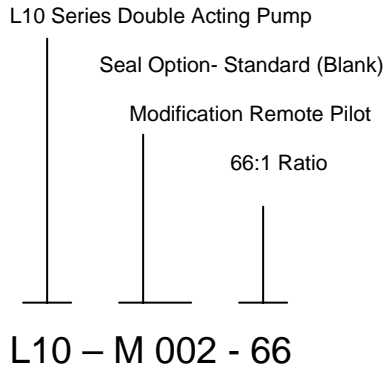
L10-256



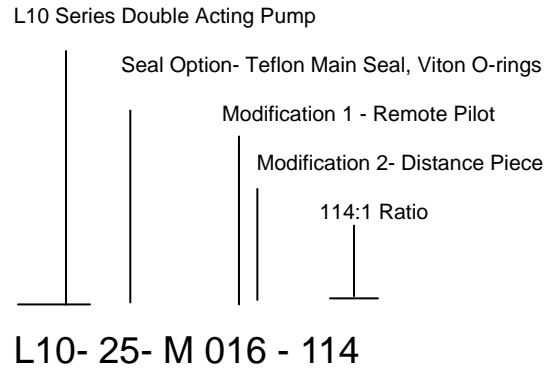
# HOW TO ORDER TABLE



Example #1 showing 1 modification



Example #2 showing 2 modifications



**TABLE 1 Pump Series Designation**

**L10** 10" Bore Double-Acting Pump

**TABLE 2** <sup>(1)</sup> **Main Seal / Hydraulic Section**

**Blank** UHMWP / Viton<sup>®</sup> (except -33)  
**Blank** Polyseal / Buna-N (-33 only)  
**21** Polyseal / Buna-N (except -33)  
**22** Polyseal / Viton<sup>®</sup>  
**23** UHMWP / Buna-N  
**24** UHMWP / EPR  
**25** PTFE / Viton<sup>®</sup> <sup>(2)</sup>

**TABLE 3 Modifications**

**Blank** Standard- No Modifications  
**002** Remote Pilot  
**005** Distance Piece  
**014** Threaded for Counter, 5/8"-18 UNF  
**015** High Pressure Outlet<sup>(3)</sup>  
**016** Remote Pilot, Distance Piece  
**017** Remote Pilot, High Pressure Outlet<sup>(3)</sup>

**TABLE 3 Modifications** (continued)

**018** Distance Piece, High Pressure Outlet<sup>(3)</sup>  
**019** Remote Pilot, Distance Piece, High Pressure Outlet<sup>(3)</sup>

**TABLE 4 Pressure Ratio**

**-15** 20:1 Actual Ratio  
**-25** 31:1 Actual Ratio  
**-35** 40:1 Actual Ratio  
**-45** 55:1 Actual Ratio  
**-65** 79:1 Actual Ratio  
**-105** 123:1 Actual Ratio  
**-125** 133:1 Actual Ratio

**Additional Special Modifications may be included with an "M" suffix at the end of the model number.**

**Notes:**

- (1) Do not fill gap on a two digit description. Refer to example above.
- (2) Available on -114, -177, -256 only.
- (3) Available on -66, -114 only.