



# Product Catalogue

**SMART TECHNOLOGY, SMART PRODUCTS**







# Bostik, Smart Adhesives

Our business is about much more than just sticking things together. For over a century, we have developed smart solutions that touch people's daily lives.

Bostik adhesives can be found almost anywhere. From home to office, from food to transport, our bonding systems are used in countless applications. Our products might be subtle but their impact is profound: contributing to a safer, more flexible, efficient and responsive world.



## Smart Innovation

Our smart identity is underpinned by innovation. We pursue innovation vigorously, applying the latest technological advances to developing "smart adhesives". Our archives are laden with examples of Bostik technologies that have disrupted markets- from potato starch-based wallpaper paste to elastic attachment adhesive for nappies.

Today, our commitment to innovation is as strong as ever. We innovate with our customers through a global R & D network comprising three international Smart Technology Centres and 11 regional centres. And we differentiate our business through this investment.

**Bostik**  
**125**  
YEARS OF  
INNOVATION



# Table of Contents

## 09 | Stationery & Craft

BLU-TACK®.....	10
BLU-TACK COLOUR.....	10
BLU STIK .....	10
GLU STIK.....	11
FINE & WIDE.....	11
GLITTER GLUE.....	12
GLUE TAPE .....	12
GLUE TAPE REFILL .....	12
GLU DOTS EXTRA STRONG.....	13
GLU DOTS REMOVABLE.....	13
MULTI-PURPOSE ADHESIVE.....	14
SPRAY ADHESIVE MULTIPURPOSE.....	14
SCHOOL GLUE COLOURED PVA.....	15
HOBBY CRAFT.....	15
CLAG® PASTE.....	16
CLAG® KIDS PVA.....	16
CLAG® CLEAR GUM.....	17
CLAG® CELMIX.....	17
MINI HOT MELT GLUE GUN & STICKS.....	18
HG3 HOT MELT GLUE GUN & STICKS.....	18

## 19 | Repair

SUPER GLUE INDUSTRIAL STRENGTH.....	20
SUPER GLU NON-DRIP GEL.....	20
SUPER GLU PRECISION.....	21
MULTI BOND.....	21
CONTACT BOND.....	22
SOFT PLASTIC.....	22
NO MORE NAILS.....	23
GENERAL PURPOSE SILICONE.....	23

## 25 | General Adhesives & Sealants

N40 PRIMER .....	26
N49 PRIMER.....	26
SEAL N' FLEX® 1 .....	27
SEAL N' FLEX® ADVANCE.....	28
SEAL N' FLEX® FC.....	28
NO MORE NAILS® CONSTRUCTION ADHESIVE .....	29
XTREME FLEX™.....	29
XTREME CLEARFIX™ .....	30
XTREME HIGH TACK™ .....	30
ROOF & GUTTER .....	31
KITCHEN & BATHROOM ACETIC CURE .....	32
KITCHEN & BATHROOM NEUTRAL CURE .....	32
PVC PRIMING FLUID .....	33
PVC PIPE CEMENT TYPE P .....	33
PVC PIPE CEMENT TYPE N .....	34
ULTRAGRIP STUD ADHESIVE.....	34
6S NEUTRAL CURE .....	35
GAP SEAL .....	35
BOSTIK V2 GENERAL PURPOSE GLAZING SILICONE .....	36
BOSTIK V60 ARCHITECTURAL GRADE SILICONE .....	36
BOSTIK V4 METAL & MASONRY SILICONE.....	37
BOSTIK V70 STRUCTURAL GLAZING SILICONE .....	37

## 39 | Fire & Acoustic Rated

FIREBAN ONE.....	40
FIRECAULK.....	41
XTREME FIRE SEAL™ .....	42

## 43 | Fillers

EXPANDA FOAM.....	44
-------------------	----

# Table of Contents

## 45 | Floor Preparation

UL- PRIMER.....	46
ULTRASEAL VAPOUR BARRIER.....	46
UL-75.....	47
UL-100.....	47
UL-200.....	48
UL-SCREED .....	48

## 49 | Construction Grouts

FLOWFILL GROUT GP.....	50
FLOWFILL PANEL GROUT.....	50
TECHFLOW GROUT HS.....	51
TECHFLOW GROUT GP.....	51
TECHFLOW GROUT HES.....	52
PATCHFIX STRUCTURAL HB.....	52
PATCHFIX FINE RENDER.....	53
PATCHFIX CONCRETE.....	53

## 55 | Hard Flooring

AXIOS GREENFORCE™ .....	56
AXIOS ULTRASET® SINGLESTEP 2™ .....	56
ULTRASET HP.....	58
ULTRASET SF.....	58
ULTRASET DX.....	59
TIMBERSET.....	59
SIMPLE-FIX.....	60

## 61 | Waterproofing

MULTIPRIME.....	62
MOISTURE SEAL.....	62
PRIMEGRIP NON POROUS.....	63
SPECIALIST PRIMER.....	63
DAMPFIX GOLD.....	64
DAMPFIX IMMERSED.....	64
DAMPFIX RAPID.....	65
DAMPFIX PU.....	65
DAMPFIX BANDAGE .....	66

## 67 | Tiling

ASAFLEX .....	68
CONFLEX .....	68
EVOFLEX .....	69
EXCELFLEX .....	69
MEGAFIX .....	70
SUPERFIXALL .....	70
ULTRAMASTIK .....	71
DESIGNER GROUT.....	71
SANDED GROUT.....	72
EPOXY GROUT .....	72

## 77 | Tools & Accessories

HANDY WIPES.....	78
APPLICATION PRO CARTRIDGE GUN .....	78
APPLICATION BARREL GUN CLEAR 37CM.....	78
AXIOS 6MM TROWEL .....	79
APPLICATION TROWEL DX.....	79
TG-4 HOT MELT GLUE GUN .....	79





# Stationery & Craft

**Imagination is at the heart of Bostik's products and craft ideas.**

Bostik has created a strong brand in the retail sector through its broad range of stationery products that include a range of glues for various uses and materials. Our products are readily available in grocery, specialty, office, and retail outlets.

Brands including Bostik Blu-Tack®, Bostik Clag® and Bostik Glu Stik have been well known and trusted for years. Whether its sticking paper into a book for a school project or sticking an important sales chart to a wall, no stationery cupboard is complete without them. Whatever your stationery adhesive needs may be, Bostik has you covered!





## Stationery & Craft

### Blu-Tack®

Bostik Blu-Tack® is the original reusable adhesive. It is an ideal multi purpose adhesive, a great alternative to drawing pins and sticky tape and has a thousand and one uses. Create 3D models or fantastic murals on your windows or walls.

#### Suitable Uses & Surfaces

- Glass
- Metal
- Plastic
- Non-porous surfaces
- Coated wallpaper
- Painted surfaces
- Vinyl coated

### Blu Stik

Bostik Blu Stik is a solvent free, non-toxic, easy to apply and use general purpose adhesive. Bostik Blu Stik goes on blue and dries clear so you know where you have applied the glue, meaning less mess and less wastage on your art & craft projects.

#### Suitable Materials

- Paper
- Cardboard
- Fabric

ITEM CODE	COLOUR	UNIT SIZE	PACK SIZE	BARCODE
30840350	Blue/Grey	75g	10	9310492000459
30604201	5 colours	75g	10	9310492000466

#### Classifications

Tested in accordance to AS/NZS ISO 8124:2012 (Safety of Toys – Part 3: Migration of certain elements).

#### Features

- Plastic and pliable
- Can be used over and over again
- Australian made
- Available in strips for ease of use
- Non-toxic suitable for the family
- Resists slump, will not shrink or dry out
- Does not contain food ingredients wheat, gluten, flour, egg or nut products. Does contain starch derived from corn

#### Recommended Uses

- Blu-Tack® has a myriad of uses around the home, school, workshop or office

ITEM CODE	COLOUR	UNIT SIZE	PACK SIZE	BARCODE
30840064	Blue	35g	Blister x 1	9310492006833
30840427	Blue	35g	Blister x 2	9310492250120
30840114	Blue	35g	Pack x 5	9310492250120
30840737	Blue	35g	Tray x 10	9310492306155
30840224	Blue	21g	Blister x 2	9310492250649
30840113	Blue	21g	Pack x 5	9310492316772
30840738	Blue	21g	Tray x 10	9310492306773
30840210	Blue	8g	Blister x 2	9310492250113
30840323	Blue	8g	Blister x 3	9310492254371
30840739	Blue	8g	Tray x 20	9310492303345

#### Classifications

Tested in accordance to AS/NZS ISO 8124:2012 (Safety of Toys – Part 3: Migration of certain elements).

#### Features

- Smooth blue stick that is easy to apply
- Dries clear
- Non wrinkle
- No mess or waste
- Acid free – doesn't yellow or corrode materials
- Non-toxic, safe for all the family
- Solvent free, safer for the environment
- Ideal for school, home and office
- Does not contain food ingredients wheat, gluten, flour, egg or nut products. Does contain starch derived from corn

#### Recommended Uses

- Designed to bond paper, cardboard and fabrics
- Ideal for scrap books, cut and paste activities, school projects, paper craft and dry mounting photographs

## Stationery & Craft

### Glu Stik

Bostik Glu Stik is a solvent free, non-toxic, easy to apply and use general purpose adhesive. This mess free glue stick glides on clear and smoothly and dries clear. Ideal for sticking to most paper and card, scrap-booking, cut and paste activities, school projects and office adhesive purposes.

#### Suitable Materials

- Paper
- Cardboard
- Fabric

ITEM CODE	COLOUR	UNIT SIZE	PACK SIZE	BARCODE
30840063	White	35g	Blister x 1	9310492006826
30840186	White	35g	Blister x 2	9310492996929
30840095	White	35g	Pack x 5	9310492016153
30840734	White	35g	Tray x 10	9310492006154
30840094	White	21g	Pack x 5	9310492016771
30840736	White	21g	Tray x 10	9310492006772
30840251	White	8g	Blister x 2	9310492255118
30840362	White	8g	Blister x 3	9310492256566
30840735	White	8g	Tray x 20	9310492060055

#### Classifications

Tested in accordance to AS/NZS ISO 8124:2012 (Safety of Toys – Part 3: Migration of certain elements).

#### Features

- Smooth white stick that is easy to apply
- Dries clear
- Non wrinkle
- No mess or waste
- Acid free – doesn't yellow or corrode materials
- Non-toxic, safe for all the family
- Solvent free, safer for the environment
- Ideal for school, home and office
- Does not contain food ingredients wheat, gluten, flour, egg or nut products. Does contain starch derived from corn

#### Recommended Uses

- Ideal for scrap books, cut and paste activities, school projects, paper craft and dry mounting photographs

### Fine & Wide

Bostik Fine & Wide Clear Glue is a clear PVOH (Polyvinyl Alcohol) liquid gum adhesive. Designed with two applicators for ease of use, a non-drip pen applicator that flows in a fine clean line as well as a spreader, for larger applications.

#### Suitable Materials

- Paper
- Cardboard
- Fabric

ITEM CODE	COLOUR	UNIT SIZE	PACK SIZE	BARCODE
30840153	Transparent	30ml	10	9310492996875

#### Classifications

Tested in accordance to AS/NZS ISO 8124:2012

#### Features

- Dual applicator
- Quality clear PVOH liquid gum adhesive
- Dries clear
- Pen applicator that flows in a fine clean line, ideal for intricate work
- Spreader applicator for covering large areas
- Sits easily in the hand
- Non-toxic safe for all the family
- No mess or waste
- Does NOT contain food ingredients wheat, gluten, flour, egg, nut or milk products

#### Recommended Uses

- Designed to bond to paper, cardboard and fabric. Ideal for scrap-books cut and paste activities, school projects and paper craft



Stationery & Craft



Glitter Glue

Bostik Glitter Glue is non-toxic, non-wrinkle, ideal for quick and easy application of glitter.

**Suitable Materials**

- Paper
- Craft
- Cardboard
- Fabric

ITEM CODE	COLOUR	UNIT SIZE	PACK SIZE	BARCODE
30840506	6 Colours	63ml x 6	10	9310492260716

**Classifications**

Tested in accordance to AS/NZS ISO 8124:2003 (Safety of Toys – Part 3: Migration of certain elements)

**Features**

- Superior quality – glitter does not come away after drying
- Washable
- Mess free
- Glitter colours do not fade away
- Does not run
- Easy to use tubes
- Variety of colours
- Non toxic – safe for all the family
- Does NOT contain food ingredients egg, nut, milk or flour

**Recommended Uses**

- Decorate paper craft, cardboard, fabric, gift boxes, photo frames and other craft projects



Glu Tape & Refill

Bostik Glu Tape is a versatile double faced strip adhesive that gives an instant, clean and seamless bond. Comes in an easy to use applicator.

**Suitable Materials**

- Fabric
- Paper

ITEM CODE	COLOUR	UNIT SIZE	PACK SIZE	BARCODE
30840185	Transparent	12 m	6	9310492996912
30608903	Transparent	Refill 12 m	6	9310492262505

**Features**

- Acid free (non-yellowing) safe for photos
- Permanent double sided
- Quality clear acrylate adhesive, no show through
- Ergonomic and easy to use applicator
- Provides an instant, clean and seamless bond
- Non-toxic – safe for the family
- No mess or waste
- Refill also available

**Recommended Uses**

- Ideal for sticking paper together, gluing photos in albums, gift packing and paper craft



Stationery & Craft

Glu Dots Extra Strong

Bostik Glu Dots Extra Strong are individually formed translucent dots of pressure sensitive adhesive which have a very high tack. They are ideal for bonding vertical surfaces.

**Suitable Materials**

- Paper
- Fabric
- Suede
- Felt
- Sequins

ITEM CODE	COLOUR	UNIT SIZE	PACK SIZE	BARCODE
30803719	Transparent	64 Dots	12	5000403109824

**Features**

- Instant bond
- Double sided
- Acid and lignin free

**Recommended Uses**

- Intended for home and school and is ideal for and craft projects using a variety of materials



Glu Dots Removable

Bostik Glu Dots Removable are ideal for arts & craft, scrap booking, card making, collages and model making.

**Suitable Materials**

- Sequins
- Beads
- Rhinestones
- Wiggly eyes

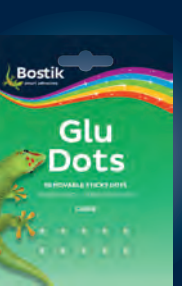
ITEM CODE	COLOUR	UNIT SIZE	PACK SIZE	BARCODE
30800951	Transparent	64 Dots	12	5000403109831

**Features**

- Instant bond
- Double sided
- Acid and lignin free

**Recommended Uses**

- Glu Dots Removable are safe, simple to use and the perfect size to allow for precise and accurate placing of small objects





## Stationery & Craft

### Multi-Purpose Adhesive

Bostik Multi-Purpose adhesive is a versatile water based adhesive that dries clear. Features a twin application for those precise and broad surface areas

**Suitable Materials**

- Paper
- Wood
- Fabric

ITEM CODE	COLOUR	UNIT SIZE	PACK SIZE	BARCODE
30840322	Milky White	36g	12	9310492263434

**CLASSIFICATIONS**

Tested in accordance to Safety of Toys – EN71 Par 2, 2 and 3.

**Features**

- Dries clear
- Non-toxic
- Safe for children
- Washable
- Solvent free

**Recommended Uses**

- Ideal for school projects, paper craft activities and household projects

## Stationery & Craft

### School Glue Coloured PVA

Bostik School Glue Coloured is a specially formulated PVA Glue with a strong bond, easy to wash and available in four vibrant colours.

**Suitable Materials**

- Wood
- Fabrics
- Leather
- Suede
- Felt
- Sequins
- Styrene foam
- Concrete/Terracotta
- Paper

ITEM CODE	COLOUR	UNIT SIZE	PACK SIZE	BARCODE
30612576	Blue	250ml	6	9310492262611
30612577	Green	250ml	6	9310492262628
30612575	Red	250ml	6	9310492262635
30612578	Pink	250ml	6	9310492262642

**CLASSIFICATIONS/STANDARDS**

Tested in accordance to AS/NZS ISO B124:2003 (Safety of Toys – Part 3: Migration of certain elements)

**Features**

- Water resistant
- Non staining (once fully cured)
- Mould and fungi resistant once fully cured
- Non-toxic, safe for all the family
- Does NOT contain food ingredients wheat, gluten, flour, egg, nut or milk products

**Recommended Uses**

- Designed to bond a variety of surfaces
- Ideal for arts and craft projects



### Spray Adhesive Multipurpose

Bostik Spray Adhesive Multipurpose is a versatile adhesive that offers a quick and easy way to apply light applications to both small and large areas.

**Suitable Materials**

- Paper
- Cardboard
- Cork
- Felt
- Rubber
- Fibreglass
- Fabrics
- Polyurethane foam

ITEM CODE	COLOUR	UNIT SIZE	PACK SIZE	BARCODE
30612304	White	350g	6	9310492262536

**Features**

- Safe, quick drying
- Heat resistant, suitable for use in heat prone areas
- Specifically designed for flat sheet laminating

**Recommended Uses.**

- May be used for mounting photographs, printed materials, artwork, labelling, lining shelves with paper, for sticking foils, and many other household materials.

### Hobby Craft

Bostik Hobby Craft PVA Glue is a versatile water based PVA emulsion designed as a multi-purpose glue which will give a strong and lasting bond to a variety of surfaces.

**Suitable Materials**

- Paper
- Cardboard
- Wood
- Fabric
- Leather
- Suede
- Felt
- Sequins
- Styrene foam
- Concrete/Terracotta

ITEM CODE	COLOUR	UNIT SIZE	PACK SIZE	BARCODE
30803744	White	100ml	6	9310492001203

**Features**

- High quality PVA
- Dries clear
- Non staining
- Water resistant
- Non-toxic, safe for the family
- Does NOT contain food ingredients wheat, gluten, flour, egg or nut products

**Recommended Uses**

- Bostik Hobby Craft PVA Glue sticks to most porous and semi porous materials ideal for detailed projects





## Stationery & Craft



### Clag® Paste

Bostik Clag® Paste is a starch based adhesive paste for bonding paper. Clag® Paste is a smooth, easy to apply white paste with excellent adhesive qualities that dries clear. The brush applicator makes it easy for children to use.

#### Suitable Materials

- Paper
- Cardboard
- Fabric

ITEM CODE	COLOUR	UNIT SIZE	PACK SIZE	BARCODE
30840133	White	150g	10	93236324
30840236	White	300g	6	93236331
30740135	White	5Kg	4	9310492910246

#### CLASSIFICATIONS/STANDARDS

Tested in accordance to AS/NZS ISO 8124:2012 (Safety of Toys – Part 3)

#### Features

- Smooth white paste
- Easy to use brush applicator
- Dries clear
- Made in Australia
- Fresh fragment formulation
- Non-toxic, safe for the family
- Does NOT contain food ingredients egg, nut or milk.

#### Recommended Uses

- Ideal for paper mache, cut and paste activities, school projects and paper craft



### Clag® Kids PVA

Bostik Clag® Kids PVA is a versatile water based PVA emulsion designed as a multipurpose glue which will give strong and lasting bond to a variety of porous and semi porous materials.

#### Suitable Materialood

- Fabrics
- Leather
- Suede
- Felt
- Sequins
- Styrene foam
- Paper
- Cardboard
- Wood
- Concrete/Terracotta

ITEM CODE	COLOUR	UNIT SIZE	PACK SIZE	BARCODE
30803754	White	236ml	12	9310492254777
30840137	White	5L	4	9310492910291

#### Features

- Non staining
- Mould and fungi resistant once fully cured
- Non-toxic safe for all the family
- Does NOT contain food ingredients such as wheat, gluten, flour, egg, nut or milk products

#### Recommended Uses

- Bostik Clag Kids PVA is designed to bond a variety of surfaces
- Ideal for models, masks, masonry and other craft work

## Stationery & Craft

### Clag® Clear Gum

Bostik Clag® Clear Gum is a clear PVA (Polyvinyl Alcohol) adhesive that dries clear with a non-drip applicator. Flows in a fine clean line.

#### Suitable Material

- Paper
- Cardboard
- Fabrics

ITEM CODE	COLOUR	UNIT SIZE	PACK SIZE	BARCODE
30803808	Transparent	150ml	6	93236294

#### Features

- Easy to apply
- Quality PVA liquid gum adhesive
- Dries Clear
- Non-toxic, safe for all the family
- Does NOT contain food ingredients flour, egg, nut or milk products
- Tested in accordance to AS/NZS ISO 8124:2012 (Safety of Toys – Part 3)

#### Recommended Uses

- Ideal for scrap books, cut and paste activities, school projects and paper craft.



### Clag® Celmix

Bostik Clag® Celmix is a cellulose powder, when reconstituted in cold water. Clag® Celmix is designed to be used as a craft adhesive or used as a sealer for hardboard and clay

#### Suitable Materials

- Paper
- Cardboard
- Clay

ITEM CODE	COLOUR	UNIT SIZE	PACK SIZE	BARCODE
30840130	Off White	500g	12	9310492910345

#### Features

- Sticks quickly and dries within 10-20 minutes depending on room temperature
- Smooth and easy to apply
- Includes measuring scoop
- Non-toxic, safe for all the family
- Made in Australia
- Does NOT contain food ingredients flour, egg, nut or milk products

#### Recommended Uses

- Bostik Clag® Celmix bonds to paper and cardboard, used as a thickener for PVA, finger painting and as a sealer for hardboard and clay. Ideal for finger painting, paper mache and other paper craft



## Stationery & Craft

### Mini Hot Melt Glue Gun & Sticks

Light weight easy to use trigger action glue guns for dispensing hot melt glue. Compact easy to use glue gun for hobbies and light household repairs.

#### Suitable Materials

- Fabric
- Wood
- Leather
- Most plastics

PRODUCT NAME	ITEM CODE	COLOUR	UNIT SIZE	PACK SIZE	BARCODE
Mini Hot Melt Glue Gun	30803736	N/A	Gun	4	9310492080017
Mini Hot Melt Glue Sticks	30803735	Clear	7.2 x100mm	10	9310492080031

#### Classifications

'C' Tick accredited - complies with AS/NZ1044 standard. Bonds instantly with no fumes or solvents.

#### Features

- Fast, clean and versatile
- High strength bond
- Easy to use trigger action
- Non-toxic, no fumes and very low odour
- Adhesive is clear and flexible when dry
- Adheres to most craft and household materials

#### Recommended Uses

- Craft projects
- Home décor projects
- Minor household repairs
- DIY projects
- Most craft and household materials

### HG3 Hot Melt Glue Gun & Sticks

Bostik HG3 Hot Melt Glue Gun is an electric hot melt gun that uses Bostik HG3 Hot Melt Glue Sticks to provide an instant, fast, clean and versatile stick.

#### Suitable Materials

- Fabric
- Wood
- Leather
- Ceramics
- Most plastics
- Polystyrene

PRODUCT NAME	ITEM CODE	COLOUR	UNIT SIZE	PACK SIZE	BARCODE
HG3 Hot Melt Glue Gun	30803695	N/A	Gun	12	9310492001654
HG3 Hot Melt Glue Sticks	30840107	Clear	112 x 100mm	10	9310492000800

#### Classifications

Bostik HG3 Glue Gun is 'C' Tick accredited (AS/NZS 10:441995 (CISPR 14) and CE approved.

#### Features

- Easy to use trigger action
- Bonds to most materials in 60 seconds
- Designed for Bostik HG3 Glue Sticks
- Rated 4110 - 240volts, 50/60Hz, 55 watts with working temperature of 193°C
- Retractable stand and fitted plug

#### Recommended Uses

- Craft projects
- Home décor projects
- Minor household repairs
- Most craft and household materials
- DIY projects

# Repair

## Repair Adhesives: Smart Innovations

When you choose a Bostik repair adhesive, you can be sure of a product that will not let you down.

Our repair adhesives utilise a number of beneficial chemical formulations meaning we have the right adhesive for the job, no matter what. Whether it is repairs to split wooden furniture, cracked ceramic plates, shattered glassware or broken metal pieces of any kind, our adhesives can do the job.

Bostik has it covered with a range of super glues that are quick and easy to use as well as reliable. When time and convenience is of the essence, any job will be a quick job when you choose Bostik.





## Repair



### Super Glue Industrial Strength

Bostik Super Glue is multipurpose glue that bonds most non-porous material in seconds. It dries to clear, permanent bond with exceptional tensile strength up to 210Kg per square cm.

**Suitable Materials**

- Metals
- Ceramics
- Woods
- Plastics
- Leather
- Natural synthetic rubber

ITEM CODE	COLOUR	UNIT SIZE	PACK SIZE	BARCODE
30804556	Clear	3ml	6	9310492001708
30804549	Clear	3ml x 2	10	9310492251493

**Features**

- Dries clear
- Exceptional tensile strength up to 210Kg per square cm
- Enables precision work due to its small size

**Recommended Uses**

- It is an excellent choice for precision work in industries such as electrical, optical, watch and jewellery and car accessories
- DIY or a multitude of Fix-It situations



### Super Glu Non-Drip Gel

Bostik Super Glu Non-Drip Gel is a single part, fast curing adhesive which bonds in seconds without the need for heat or hardener. It provides very strong bonds of high tensile strength, has the advantage if a non-drip consistency, and is economical in use.

**Suitable Materials**

- Porcelain
- Rubber
- Metals
- Leather
- Wood
- Pottery
- Ceramics
- Plastic

ITEM CODE	COLOUR	UNIT SIZE	PACK SIZE	BARCODE
30813350	Colourless	3g	12	5000399002192

**Features**

- Dries clear
- Enables precision work
- Non drip gelled formula
- Instant bond to most surfaces

**Recommended Uses**

- Bostik Super Glu Non Drip Gel is suitable for bonding some types of jewellery
- It is particularly useful in the home and other locations for a variety of assembly and repair applications
- Repair of pottery and china

## Repair

### Super Glu Precision

Bostik Super Glu Precision Pen is a single part, fast curing adhesive which bonds in seconds without the need for heat or hardener. It is extremely economical in use and forms very strong bonds of high tensile strength.

**Suitable Materials**

- Porcelain
- Many rubbers
- Common metals
- Some types of jewellery
- Most plastics

ITEM CODE	COLOUR	UNIT SIZE	PACK SIZE	BARCODE
30813346	Colourless	2g	6	9310492262512

**Features**

- Instant bond to most surfaces
- Allows application of one drop or continuous flow, when required
- Economical in use (one drop bonds 5-10m<sup>2</sup>)
- Colourless

**Recommended Uses**

- Some types of jewellery
- Repair applications
- Home repairs
- Variety of assembly applications



### Multi Bond

Bostik Multi Bond is a general purpose solvent based nitrile rubber adhesive. It is nearly clear in colour and will give excellent bonds that are both chemical and temperature resistant. It is packaged in a convenient aluminium tube for ease use

**Suitable Materials**

- Leather
- Metals
- Wood
- Canvas
- PVC
- Other plastics

ITEM CODE	COLOUR	UNIT SIZE	PACK SIZE	BARCODE
30804535	Clear	30ml	6	9310492001104

**Features**

- Quick bonding
- Easy to use
- Chemical and temperature resistant

**Recommended Uses**

- This is an excellent product where quick bonding and a clear bond line is required especially in the DIY market
- It is widely used in the repair of toys, leather goods, furniture, upholstery, jewellery and in the handicraft making areas



## Repair

### Contact Bond

Bostik Contact Bond is a solvent based, high solids, brush or scraper grade contact adhesive. It may be easily applied by brush or scraper giving a secure and lasting bond making it clean and economical to use.

#### Suitable Materials

- Wood
- MDF
- Particle Board
- Plywood
- Leather
- Felts
- PVC
- Metal
- Neoprene rubbers

ITEM CODE	COLOUR	UNIT SIZE	PACK SIZE	BARCODE
30804537	Pale Yellow	50ml	6	9310492002750

#### Features

- Safe quick drying
- Heat and water resistant
- Good brushability
- Excellent adhesion to porous and non-porous surfaces
- Provides an extra strong and flexible bond on contact

#### Recommended Uses

- Bostik Contact Bond is primarily used in the furniture and allied industries for fixing plastic laminates and rigid or flexible decorative surface coverings



### Soft Plastics

Bostik Soft Plastics Adhesive is a strong water resistant, adhesive designed for bonding most common soft plastics. It bonds rapidly to form a strong but flexible, water resistant seal.

#### Suitable Materials

- PVC
- Polyurethane
- Natural and sulfochlorinated rubbers
- Particle board
- Plywood
- Leather
- Metal

ITEM CODE	COLOUR	UNIT SIZE	PACK SIZE	BARCODE
30803650	Clear	20ml	6	5000399006206

#### Features

- Fast drying formulation
- PVC repair patch film supplied
- Water resistant bonds

#### Recommended Uses

- Typical applications include repairing inflatables, plastic raincoats, tents and waders

## Repair

### No More Nails

Bostik No More Nails® is a versatile general-purpose construction adhesive suitable for bonding a wide variety of building materials for internal or external applications.

#### Suitable Materials

- Metal
- Timber
- Concrete
- Plaster
- Foamed polystyrene
- General building materials

ITEM CODE	COLOUR	UNIT SIZE	PACK SIZE	BARCODE
30804572	Straw/Beige	75gm	6	9310492002736

#### Features

- Nail free general construction adhesive
- High bond strength
- Excellent adhesion and sealing properties
- Excellent green strength
- Good temperature resistance
- Chemical resistant
- Good slump resistance
- Bonds a variety of construction and building materials
- Ideal for interior and exterior applications

#### Recommended Uses

- As a contact adhesive for installation of wall and floor panels
- Metal, timber & other sheets of plan materials to concrete, plaster or other rigid surfaces
- Most bonding applications where high strength, gap filling one component adhesive is required
- Timber, metal, cementitious and plaster sheets to timber or metal studs
- Installation of battens or other fixings to brick, masonry or concrete walls
- Ideal for mirror backed tiles

### General Purpose Silicone

Bostik General Purpose Silicone is an industrial grade, neutral cure silicone sealant designed for sealing lap joints in metal guttering, aluminum, roofing, flashings and down pipes. Specifically designed to meet Australian conditions.

#### Suitable Materials

- Steel
- Aluminium
- Concrete
- Brick
- Masonry
- Glass
- Ceramics
- Timber
- PVC Pipe

ITEM CODE	COLOUR	UNIT SIZE	PACK SIZE	BARCODE
30804562	Clear	30ml	6	9310492002477

#### Features

- Excellent General Purpose Sealant
- Permanently flexible
- Suitable for interior and exterior applications
- Unaffected by rain, snow, extreme temperature change and constant ultra violet exposure
- Waterproof
- Excellent adhesion properties

#### Recommended Uses

- Metal Roofing Systems
- Flashing & Down Pipes
- Lap joints in Zincalume, Colourbond and other BHP decorative Sheet-metal
- Skylights & Extraction Units
- Pipe or Sprinkler System Penetrations
- Air conditioning
- Masonry
- Block or brickwork







# Adhesives & Sealants

**High quality solutions made for trade and construction professionals**

A comprehensive joint sealant offering for the construction industry, providing reliable, flexible and waterproof joints for a broad range of applications.

You'll find Bostik sealant products used for facade and roofing systems, wall panels and partitions, weatherproofing and windows and doors. Our smart sealants are used for a broad range of applications in construction projects ranging from small domestic renovations, all the way up to river-spanning bridges and skyscrapers.





Adhesives & Sealants



N40 Primer

Bostik N40 is a clear non-staining solvent based primer/cleaner for promoting the adhesion of polyurethane sealants and waterproof membrane systems to non-porous substrates such as rigid plastics and most materials.

Suitable Materials

- Rigid metals
- PVC plastics

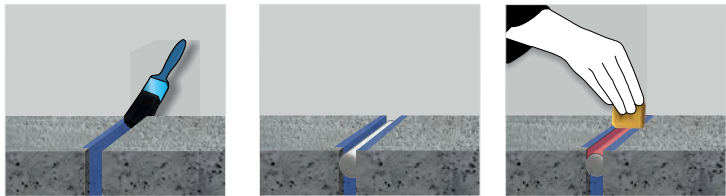
ITEM CODE	COLOUR	UNIT SIZE	PACK SIZE	BARCODE
30608603	Clear	1L	12	9310492131900

Features

- Fast Drying
- Cleans & primes surfaces in one action
- One part – no mixing required

Recommended Uses

- Preparation of glass for windscreen bonding
- Primer/Cleaner



N49 Primer

Bostik N49 Primer is designed for use with the Bostik polyurethane sealant range to ensure adhesion to porous substrates

Suitable Materials

- Porous substrates

ITEM CODE	COLOUR	UNIT SIZE	PACK SIZE	BARCODE
30608602	Clear	1L	12	9310492131757

Features

- Substrate primer for porous substrates

Recommended Uses

Sealants requiring the application of Bostik N49 Primer on porous substrates only are:

- Seal N Flex 1
- Seal N Flex FC
- Fireban One

Adhesives & Sealants

Seal N' Flex® 1

Bostik Seal N' Flex® 1 is a one part, gun grade, moisture curing polyurethane sealant.

Suitable Materials

- Masonry
- Timber
- Plasterboard
- Fibre cement sheet
- Aluminium windows
- Doorframes
- Granite
- Sandstone
- Marble
- GRC
- Fibreglass
- Most specialty panel systems

ITEM CODE	COLOUR	UNIT SIZE	PACK SIZE	BARCODE
30803243	Grey	300ml	20	9310492000831
30804581	Black	300ml	20	9310492000855
30840067	White	300ml	20	9310492000848
30840034	Grey	600ml	20	9310492131702
30840037	Limestone	600ml	20	9310492131665
30840036	Black	600ml	20	9310492131672
30840033	White	600ml	20	9310492131696
30840046	Sandstone	600ml	20	9310492131658
30800964	Redwood	600ml	20	9310492100708
30800963	Off White	600ml	20	9310492100869
30800959	Epping Grey	600ml	20	9310492100722

Features

- ± 50% joint movement
- Resistant to normal weathering conditions such as rain, sunlight, snow, atmospheric contamination and pollution
- CSIRO RILEM LONG TERM SEALANT DURABILITY STUDY DBCE Doc.97/196 (M).

Recommended Uses

- Insitu concrete and render
- Brickwork & blockwork
- Weatherproof sealing of joints in precast and tilt up panels
- Plasterboard face and paper lined recessed edges

Colour Chart



600mL

300mL

\*The colours on this chart have been matched as closely as possible to actual silicone colours and should be used as a guide only.



## Adhesives & Sealants

### Seal N' Flex® Advance

Bostik Seal N' Flex Advance is a high quality professional universal low modulus sealant based on hybrid technology. It cures under the influence of humidity to form a durable elastic rubber.

#### Suitable Materials

- Concrete
- Render
- Brickwork
- Plasterboard
- Fibre cement sheet
- Stainless steel
- Plastics
- Aluminium
- Granite
- Sandstone
- Marble

ITEM CODE	COLOUR	UNIT SIZE	PACK SIZE	BARCODE
30613041	White	300ml	20	9310492263632
30613039	Grey	300ml	20	9310492263618
30613040	Black	300ml	20	9310492263625
30613043	White	600ml	20	9310492263663
30613042	Grey	600ml	20	9310492263649
30613044	Black	600ml	20	9310492263656

#### Features

- Excellent adhesion without primer to most, even damp, surfaces
- Low modulus ( $\pm 25\%$  joint movement)
- Moisture curing, almost odourless
- Free of isocyanates, solvents and silicones
- No shrinkage
- No bubbling
- Good resistance to UV, water and weather

#### Recommended Uses

- Precast and tilt up panels
- Brickwork and blockwork
- Plasterboard face and paper lined recessed edges
- Aluminium windows
- GRC, fibreglass and mostly specialty panel systems
- Painted wood
- A variety of plastics

### Seal N' Flex® FC

Bostik Seal N' Flex® FC is a one part, gun grade, fast curing, flexible construction grade polyurethane sealant. A medium / high modulus product, which forms a resilient and permanently elastic seal

#### Suitable Materials

- Metal
- Concrete
- Brick
- Wood
- Plasterboard
- GRC & CFC

ITEM CODE	COLOUR	UNIT SIZE	PACK SIZE	BARCODE
30840072	Grey	600ml	20	9310492020822
30803687	White	600ml	20	9310492020877
30800512	Black	600ml	20	9310492252643
30840076	White	300ml	20	9310492020846
30840075	Black	300ml	20	9310492020853
30840073	Grey	300ml	20	9310492131924

#### Features

- High bond strength
- Non-slumping
- Resistant to fungal attack
- Excellent resistance against hydrolysis, ageing and a wide range of chemicals
- One component, no mixing required
- Potable water approval to AS4020
- High movement accommodation ( $\pm 25\%$ ) ASTM C719
- Paintable (refer to technical data sheet)

#### Recommended Uses

- High traffic floors

## Adhesives & Sealants

### No More Nails® Construction Adhesive

Bostik No More Nails® is a general purpose construction adhesive suitable for bonding a wide variety of building materials. Its superb bond strength is ideal for demanding situations.

#### Suitable Materials

- Timber
- Metal
- Plaster Sheets

ITEM CODE	COLOUR	UNIT SIZE	PACK SIZE	BARCODE
30607006	Straw	320gm	15	9310492256283

#### Features

- Easy to gun and easy to apply
- Fast grab
- Bonds to a wide variety of construction and building materials
- Excellent slump resistance
- Interior and exterior applications
- Polystyrene safe

#### Recommended Uses

- As a contact adhesive for installation of wall and floor panels, timber, particle board, plasterboard, MDF, structural flooring panels, masonry, aluminium, polystyrene, galvanised iron, steel, metal, glass, concrete and cement sheeting

### Xtreme™ Flex

A high quality and high performance universal sealant and adhesive based on Modified Silyl Polymer (MSP) technology which cures under influence of humidity to form a durable elastic rubber.

#### Suitable Materials

- Stone / concrete / ceramic
- Glass
- Plasterboard
- PU
- PVC
- Hard plastics
- Enamel
- Copper / lead / zinc
- Aluminium (including COLORBOND® and ALUCOBOND®)
- Metals / alloys / stainless steel
- Cement fibre panels
- Wood

ITEM CODE	COLOUR	UNIT SIZE	PACK SIZE	BARCODE
30610668	White	290ml	12	9310492262192
30610797	Grey	290ml	12	9310492262215
30610681	Black	290ml	12	9310492262239

#### Features

- 400% maximum expansion
- Paintable after skinning (10 minutes)
- No shrinkage and bubble free
- Mould resistant
- Permanently elastic
- UV-resistant
- Isocyanate free

#### Recommended Uses

- Universal bonding and sealing for internal and external applications.
- Adheres perfectly, without primer, on most, even damp surfaces.
- Creates a permanently elastic bond and seal with high mechanical resistance, end strength and modulus (flexibility).



600mL

300mL



600mL

300mL



Adhesives & Sealants



Xtreme™ ClearFix

A high performance, low odour, all-in-one adhesive and sealant based on MSP (Modified-Silyl Polymer) technology that creates a high strength bond as well as a highly flexible, crystal clear seal.

Suitable Materials

- Most building materials
- Wood
- Glass
- Metal
- Plastic
- Mineral based substrates

ITEM CODE	COLOUR	UNIT SIZE	PACK SIZE	BARCODE
30610665	Transparent	290ml	12	9310492262185

Features

- Powerful all-in-one adhesive and sealant
- No primer required on most surfaces
- Permanently flexible
- High strength bond
- Crystal clear
- UV-resistant
- Isocyanate free

Recommended Uses

- Bostik Xtreme™ ClearFix is ideal for indoor applications where a super transparent/invisible seal or bond is desirable. It bonds and elastically seals almost all building materials and surfaces.
- Glass to glass sealing and bonding, showers, bathtubs and vanities, etc.



Xtreme™ High Tack

A high performance professional adhesive based on MSP (Modified-Silyl Polymer) technology. It has an extremely high initial tack which cures under influence of humidity to form a durable elastic rubber.

Suitable Materials

- Stone / Concrete
- Mirrors / glass
- Plasterboard
- PU / PVC
- Hard plastics
- Enamel / Ceramic
- Copper / lead / zinc / tin
- Aluminium (including COLORBOND® and ALUCOBOND®
- HPL / cement fibre panels
- Wood

ITEM CODE	COLOUR	UNIT SIZE	PACK SIZE	BARCODE
30610679	White	290ml	12	9310492263151

Features

- Extreme initial grab
- No primer required on most surfaces
- No fixing needed during curing
- Permanently flexible
- Isocyanate free

Recommended Uses

- Developed as a universal adhesive for bonding many building materials
- Bonding where high early strength is desired to reduce the necessity of mechanical fixing and support through the use of nails, screws and bracing.

Adhesives & Sealants

Roof & Gutter

Bostik Roof & Gutter premium silicone is a one component, mid flex, neutral curing 100% silicone that provides excellent adhesion to many common substrates.

Suitable Materials

- Steel
- Aluminium
- Glass
- Concrete
- Brick
- Ceramic
- Terracotta roof tiles

ITEM CODE	COLOUR	UNIT SIZE	PACK SIZE	BARCODE
30800828	Translucent	300ml	20	9310492002552
30840059	White	300ml	20	9310492012568
30840060	Grey	300ml	20	9310492012575
30840061	Black	300ml	20	9310492012582
30840238	Grey	600ml	20	9310492251233
30804566	Translucent	600ml	20	9310492251226
30840232	Surf Mist®	300ml	6	9310492996899
30840335	Classic Cream™	300ml	6	9310492251035
30840233	Cottage Green®	300ml	6	9310492996844
30840235	Woodland Grey®	300ml	6	9310492996882
30840448	Monument®	300ml	6	9310492259901

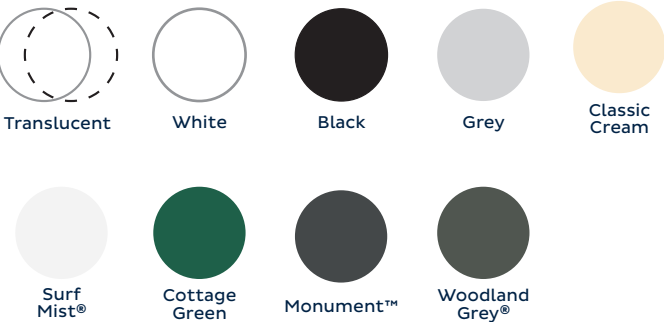
Features

- Translucent and Grey are suitable for drinking water as per Australian standards AS/NZS 4020 and meet ATS 5200.014:2004 standards

Recommended Uses

- Plumbing roofing applications
- Metal roofing systems
- Metal water tanks
- Spouting / flashing and down pipes
- Lap joints in Zincalume, Colorbond® and other decorative sheet metal
- Skylights and metal and PVC flues and extraction units
- Pipe or sprinkler system penetrations
- Air conditioning ducting and sheet-metal fabrications
- General purpose sealant for building materials

Colour Chart\*



\*The colours on this chart have been matched as closely as possible to actual silicone colours and should be used as a guide only.

™Colour name is a trademark of BlueScope Steel Australia.

®Colorbond and Colour name is a registered trademark of BlueScope Steel Australia.



Adhesives & Sealants

Adhesives & Sealants



Kitchen & Bathroom  
(Acetic Cure)

Bostik Kitchen & Bathroom Premium Silicone is an acetic (acetoxo) curing sealant. It is specially formulated to resist mildew when exposed to prolonged hot and humid environments.

Suitable Materials

- Glass / fibre glass
- Ceramic tile
- Most laminated surfaces

ITEM CODE	COLOUR	UNIT SIZE	PACK SIZE	BARCODE
30818135	Translucent	300ml	20	9310492996905
30804571	White	300ml	20	9310492002408

Features

- Waterproof
- UV resistant
- Rapid curing
- Permanently flexible
- Mould resistant

Recommended Uses

- Sealing in wet areas
- Bathtubs and showers
- Glass to Glass screens
- Rimless sinks
- Bathroom and Kitchen fixtures
- Toilet pans. (note: not to be used on marble, granite or stone)



Kitchen & Bathroom  
(Neutral Cure)

Bostik Kitchen & Bathroom Premium Silicone is a neutral (oxime) curing silicone that resists mildew in hot and humid environment.

Suitable Materials

- Glass partitions
- Ceramic tile
- Fibre Glass
- Vitreous enamel
- Most laminated surfaces

ITEM CODE	COLOUR	UNIT SIZE	PACK SIZE	BARCODE
30840127	Translucent	300ml	20	9310492209630
30840077	White	300ml	20	9310492202563

Features

- Mould resistant
- Permanently flexible
- Low odour
- Waterproof
- Low V.O.C
- Non corrosive

Recommended Uses

- Seals around bath tubs, shower stalls, wall fixtures, rimless sinks
- Kitchen and bathroom fixtures
- May be used for ceramic tile grouting and is suitable for galvanised zinc coated steel or concrete surfaces

PVC Priming  
Fluid

Bostik PVC Priming Fluid is a solvent based fluid formulated for the cleaning and priming of PVC pipes and fittings prior to the application of PVC pipe solvent cements.

Suitable Materials

- PVC pipes

ITEM CODE	COLOUR	UNIT SIZE	PACK SIZE	BARCODE
30840469	Red	250ml	18	9310492260037
30840470	Red	500ml	18	9310492260044
30840472	Red	4L	4	9310492260068
30840473	Clear	500ml	18	9310492260075
30840494	Clear	4L	4	9310492260426

Features

- Meets Australian & NZ standards AS/NZS 3879
- Suitable for use in contact with drinking water applications - meets AS/NZS 4020
- WaterMark certified as per the Plumbing Code of Australia
- Low VOC

Recommended Uses

- For bonding with PVC-U & ABS fittings
- Use with Type N or Type P cement
- Suitable for use with drinking water



PVC Pipe  
Cement Type P

Bostik PVC Pipe Cement Type P is a specifically formulated welding cement for joining unplasticised PVC (PVC-U) pipes and fittings in pressure piping systems.

Suitable Materials

- PVC -U pipes
- PVC-U sheets

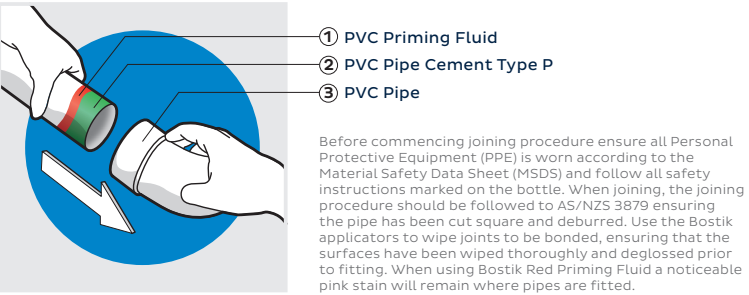
ITEM CODE	COLOUR	UNIT SIZE	PACK SIZE	BARCODE
30840474	Green	250ml	18	9310492260082
30840475	Green	500ml	18	9310492260099
30840492	Clear	500ml	18	9310492260402

Features

- Meets Australian & NZ standards AS/NZS 3879
- Suitable for use in contact with drinking water applications - meets AS/NZS 4020
- Low VOC

Recommended Uses

- For bonding with PVC-U & PVC-U fittings
- Suitable for pressure applications
- Suitable for use with drinking water





## Adhesives & Sealants

### PVC Pipe Cement Type N

Bostik PVC Pipe Cement Type N is a specifically formulated welding cement for joining unplasticized PVC (PVC-U) pipes and fittings in non-pressure piping systems.

#### Suitable Materials

- PVC-U Pipes
- ABS Fittings

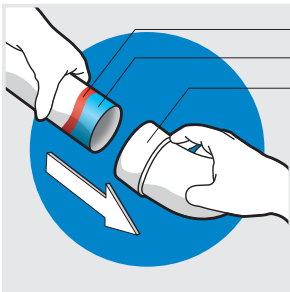
ITEM CODE	COLOUR	UNIT SIZE	PACK SIZE	BARCODE
30840463	Blue	250ml	18	9310492259970
30840464	Blue	500ml	18	9310492259987
30840466	Blue	4L	4	9310492260006
30840467	Clear	500ml	18	9310492260013
30840493	Clear	4L	4	9310492260419

#### Features

- Suitable for use in contact with drinking water applications
  - meets AS/NZS 4020
- Low VOC

#### Recommended Uses

- For bonding with PVC-U pipes & PVC-U fittings
- For bonding PVC-U pipes to ABS fittings only



- ① PVC Priming Fluid
- ② PVC Pipe Cement Type N
- ② PVC Pipe

Before commencing joining procedure ensure all Personal Protective Equipment (PPE) is worn according to the Safety Data Sheet and follow all safety instructions marked on the bottle. When joining, the joining procedure should be followed to AS/NZS 3879 ensuring the pipe has been cut square and deburred. Use the Bostik applicators to wipe joints to be bonded, ensuring that the surfaces have been wiped thoroughly and deglossed prior to fitting. When using Bostik Red Priming Fluid a noticeable pink stain will remain where pipes are fitted.

ITEM CODE	COLOUR	UNIT SIZE	PACK SIZE	BARCODE
30606231	Pink	5.2Kg	4	9310492123615

#### Features

- H2 LOSP Formulated
- Suitable for timber and metal frames
- High bond strength
- Water-based non-toxic
- Non slump
- Suitable for vertical, horizontal applications
- Overhead applications
- Conforms to AS 2753-1985.

#### Recommended Uses

- To fix plasterboard to steel or timber studs and frames (in conjunction with nails and screws)
- Filling irregular gaps between plasterboard and frame
- Bonding timber to concrete or metal
- Bonding chipboard, plywood, masonite and Hardie-Flex™ sheeting to joints or solid floors/ walls

### UltraGrip Stud Adhesive

Bostik UltraGrip is a specially formulated non-toxic high strength acrylic stud adhesive designed to minimize nail and screw “popping” caused by timber shrinkage or frame movement if applied in accordance with AS 2589-1983.

#### Suitable Materials

- Timber
- Concrete
- Metal
- Chipboard
- Plywood
- Masonite
- Hardie-Flex™ sheeting



## Adhesives & Sealants

### 6S Neutral Cure

Bostik 6S is a one component, non-flowing, neutral cure, mid flex silicone sealant. It cures by absorption of atmospheric moisture to form a flexible and durable elastomeric sealant.

#### Suitable Materials

- Fibre glass
- Ceramic Tiles
- Granite
- Marble
- Stone

ITEM CODE	COLOUR	UNIT SIZE	PACK SIZE	BARCODE
30608431	Charcoal	300ml	15	9310492252018
30608459	Gloss White	300ml	15	9310492251936
30608432	Mid Grey	300ml	15	9310492251974
30608433	Pewter	300ml	15	9310492252001
30608435	Silver Ash	300ml	15	9310492252025
30608417	Titanium Off White	300ml	15	9310492251943
30608415	Matt White	300ml	15	9310492251929
30608418	Translucent	300ml	15	9310492251912

#### Features

- Contains an effective fungicide
- Reduce the growth of mould and mildew
- Offers excellent adhesion to powder coated metal
- Will not slump in typical construction joints.

#### Recommended Uses

- Bathrooms, fibreglass spa units, shower screens, ceramic tiles
- Tiles and grout areas. (for granite, marble and some porous stones, refer to Bostik 5CLM)
- Around edges of kitchen bench tops
- Edges of splashbacks (\*Not to be used on the back of splashbacks)

#### Colour Chart\*



ITEM CODE	COLOUR	UNIT SIZE	PACK SIZE	BARCODE
30605381	White	450g	20	9310492259833

#### Features

- Excellent sealing and adhesion
- Slump resistant
- Skins within 15 minutes
- Can be over painted after 2 hours (Refer to Technical Data Sheet)
- Water clean up
- Low VOC

#### Recommended Uses

It offers excellent adhesion properties suitable for sealing gaps and low movement joints

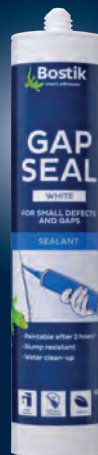
- Skirting boards, architraves, plasterboard, window and door frames
- For low movement joints, between light partition walls
- Filling cracks in plaster, brickwork, concrete, aluminium. wood and glass

### Gap Seal

Bostik Gap Seal is a general purpose water based acrylic gap filler, suitable for use on interior and exterior areas prior to painting.

#### Suitable Materials

- Plasterboard
- Brick
- Concrete
- Aluminium
- Wood
- glass



\*The colours on this chart have been matched as closely as possible to actual silicone colours and should be used as a guide only.



## Adhesives & Sealants

### Bostik V2 General Purpose Glazing Silicone

Bostik V2 is a one component, acetic cure, high modulus silicone sealant. It cures by absorption of atmospheric moisture to form a flexible and durable elastomeric sealant

#### Suitable Materials

- Fibreglass
- Aluminium
- Stainless steel

ITEM CODE	COLOUR	UNIT SIZE	PACK SIZE	BARCODE
30840198	Black	300ml	15	9310492252155
30840199	Translucent	300ml	15	9310492252131

#### Features

- High modulus; acetic cure
- Superior adhesion to broad range of building materials; meets the currently accepted standard for glazing
- Non-slumping formula
- Long life reliability
- Excellent natural ageing stability – maintains elastomeric properties even under harsh conditions and temperature extremes

#### Recommended Uses

- Frameless shower screens
- Structural glazing (glass to glass application)
- Fin glazing
- Butt glazing
- General glazing application
- General glazing application

### Bostik V60 Architectural Grade Silicone

Bostik V60 is a high performance architectural grade Glazing silicone. One component, non-flowing, Neutral cure, High modulus sealant. It cures by absorption of atmospheric moisture to form a flexible and durable elastomeric sealant.

#### Suitable Materials

- Fibre glass
- Ceramic Tiles
- Granite
- Marble
- Stone

ITEM CODE	COLOUR	UNIT SIZE	PACK SIZE	BARCODE
30804555	Black	300ml	15	9310492252209
30840214	Grey	300ml	15	9310492252186
30840556	Silver	300ml	15	9310492252223
30804561	Translucent	300ml	15	9310492252162
30840201	White	300ml	15	9310492252179

#### Features

- Bostik V60 is a premium grade neutral cure glazing weatherproofing silicone sealant
- Its superior adhesion to painted and anodized aluminum & glass has made this silicone the market leader in the glass market for the last 25 years
- The thixotropic nature of this product ensures that it will not slump in typical construction joints
- Excellent U.V. Stability
- Long Life Reliability
- Bostik V60 has excellent natural ageing stability. It will maintain its elastomeric joint sealant properties permanently, even under harsh conditions and temperature extremes.

#### Recommended Uses

- Two sided structural glazing. (Colours only on to aluminum substrate)
- Structurally glazed systems. (Subject to Bostik approval and review of design first).
- Fin Glazing. (all V60 colours including trans).
- Sealing of Laminated and reflective glass
- General glazing applications
- Sealing of mirrors and splash backs (not vinyl backed)
- Toughened Glass Assemblies
- Weather Sealing in curtain walls and building facades
- Weather Sealing of composite metal panels
- Drinking Water – tank manufacturing.

## Adhesives & Sealants

### Bostik V4 Metal & Masonry Silicone

Bostik V4 is a one component, non-flowing, neutral cure, low modulus silicone sealant. It cures by absorption of atmospheric moisture to form a flexible and durable elastomeric sealant.

#### Suitable Materials

- Concrete
- Aluminium
- Brass
- Copper
- Glass
- Brickwork

ITEM CODE	COLOUR	UNIT SIZE	PACK SIZE	BARCODE
30840578	Charcoal	370g	15	9310492252117
30840579	Dark Grey	370g	15	9310492252087
30840580	White	370g	15	9310492252070

#### Features

- Highly elastic neutral cure low modulus sealant
- Superior adhesion to metal and masonry
- Non-slumping formula
- Long Life Reliability
- Excellent natural ageing stability – will maintain its elastomeric joint sealant properties permanently, even under harsh conditions and temperature extremes.

#### Recommended Uses

- Precast panels
- Concrete panels
- Anodized aluminum
- Coated copper and brass plaques
- Sealing of polycarbonate sheeting
- Splash back
- Expansion joints on pavers
- General purpose building and construction sealant

ITEM CODE	COLOUR	UNIT SIZE	PACK SIZE	BARCODE
30606430	Black	300ml	15	9310492252230

#### Features

- Bostik V70 silicone sealant meets the currently accepted engineering standards for structural glazing.
- This high strength silicone sealant has very good unprimed adhesion properties, to a broad range of building substrates. \*(Substrate testing must always be carried out first).
- These features make this product a very good reliable structural adhesive sealant for both the Construction and industrial industries.
- The thixotropic nature of this product ensures that it will not slump in typical construction joints.
- Excellent U.V Stability
- Long Life Reliability
- Bostik V70 has excellent natural ageing stability. It will maintain its elastomeric structural joint sealant properties permanently, even under harsh conditions and temperature extremes.

#### Recommended Uses

- Structurally glazed curtain wall systems
- Two and Four sided structural glazing
- Fin glazing
- Non Structural Glazing applications
- Building Weather seal
- Toughened Glass Assemblies
- Automotive Glazing
- Adhering of composite panels
- Stiffener for metal panels application

### Bostik V70 Structural Glazing Silicone

Bostik V70 is a high performance architectural grade structural glazing silicone. One component, non flowing, Neutral cure, High modulus sealant. It cures by absorption of atmospheric moisture to form a flexible and durable elastomeric sealant

#### Suitable Materials

- Fibre glass
- Aluminium
- Glass
- Metal



# Fire & Acoustic Rated

## Smart Fire Protection

At Bostik, we understand that meeting fire safety standards is essential to all areas of industry. We strive to uphold the highest levels of fire safety through our cutting-edge sealant technologies.

Our fire proofing solutions are ideal for commercial applications, possessing fire resistant properties with exceptional longevity.

Our intumescent sealants are perfectly formulated for the purpose of high quality fire-retardancy in accordance with Australian standards. When subjected to high heat, our smart sealants swell in order to support in the filling of potentially hazardous voids and gaps. This forms an insulating char that helps to prevent the permeation of smoke and flame, enabling your installation to withstand extreme temperatures for up to four hours under certain conditions while maintaining structural integrity.

Bostik fireproofing sealants are suitable for all forms of ventilation, piping, expansion and construction joints and can bond to an impressive range of substrates - from wood, metal and glass masonry, concrete and timber. We introduce to you the Bostik range of fire sealants.





Fire & Acoustic Rated



Fireban One

Bostik Fireban One is a fire rated, intumescent, low modulus, one component, and Class A polyurethane sealant.

Suitable Materials

- Concrete floors
- Concrete walls
- Precast & tilt up panels
- Brickwork & blockwork
- Masonry
- Plasterboard (fire rated & acoustic rated)
- Fibre cement sheet (fire rated & acoustic rated)

ITEM CODE	COLOUR	UNIT SIZE	PACK SIZE	BARCODE
30840044	Limestone	600ml	20	9310492131887

Features

- Weatherproof fire rated sealing of joints
- Application temperature +5°C to +35°C
- Resistant to normal weathering conditions such as rain, sunlight, snow, sleet, atmospheric contamination and pollution
- Retains original properties after years of exposure

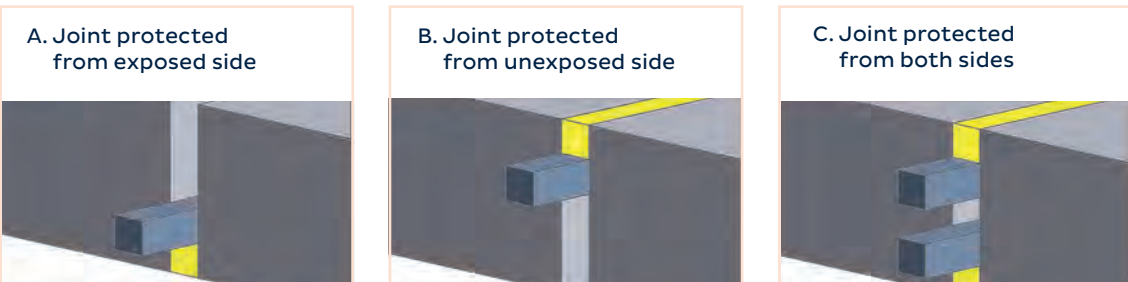
Recommended Uses

- Fire and acoustic rated sealing of joints in:
- Insitu concrete floors and walls.
  - Precast and tilt up panels.
  - Brickwork & blockwork.
  - Rendered masonry.
  - Plasterboard (Fire rated &/or Acoustic rated)
  - Fibre cement sheet (Fire rated &/or Acoustic rated)

Masonry Construction and Expansion Joints Concrete, Brick and Block Walls



Concrete and Pre Cast Slabs



Fire & Acoustic Rated



600mL

300ml

Firecaulk

Bostik Firecaulk™ is an acrylic (water based) sealant designed for sealing internal joints and wall penetrations subject to low movement, requiring up to 4 hours fire rating compliance.

Suitable Materials

- Concrete
- Precast internal jointing
- Perimeter sealing of door & window frame
- Brickwork & blockwork joints
- Plasterboard
- Acoustic gap filling

ITEM CODE	COLOUR	UNIT SIZE	PACK SIZE	BARCODE
30840066	White	300ml	20	9310492132105
30801129	Limestone	600ml	20	9310492002538
30840317	Grey	600ml	20	9310492256832

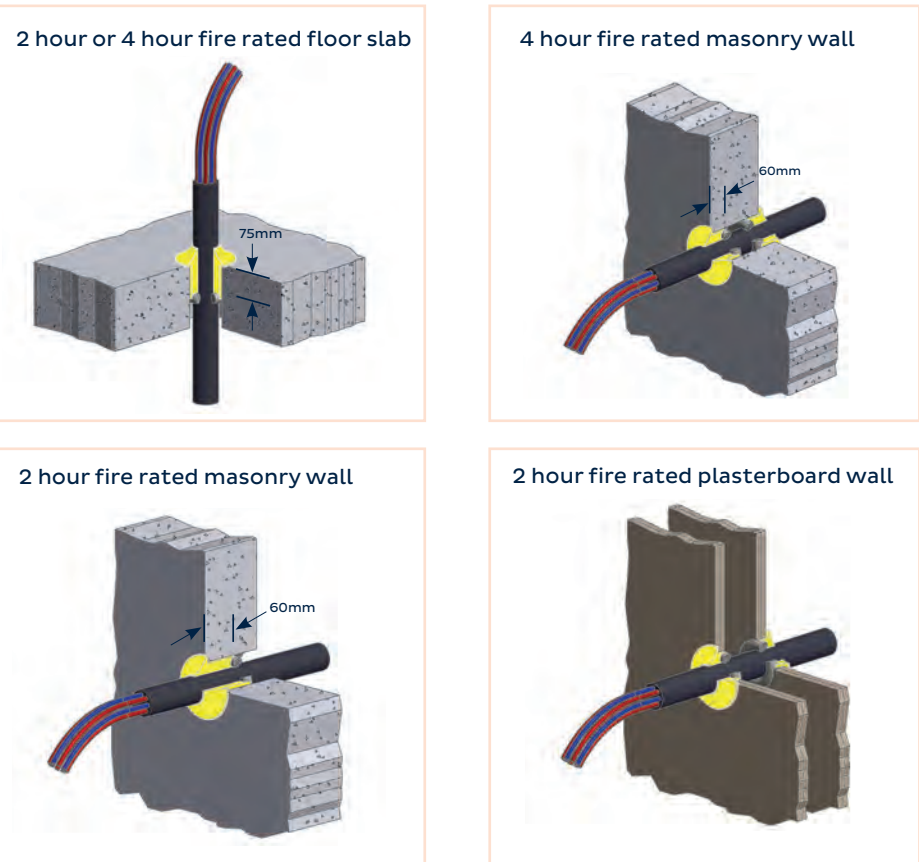
Features

- Prevent the spread of fire and smoke through walls and floors
- Application temperature +5°C to +35°C
- Up to 4 hours fire resistance in approved configurations
- Excellent joint movement flexibility (+/-25%)
- Fire rating applicable for gaps up to 40mm
- Acoustic capabilities with a 67 STC rating in plasterboard construction

Recommended Uses

- Sealing of gaps around pipes, cables, ducts and services which penetrate fire rated walls and floors
- Fire rated cable penetrations in concrete and masonry
- Installation of fire rated sealant in concrete walls and floors
- For vertical and horizontal joints
- Application requiring acoustic properties or STC rating
- Sealing construction and expansion joints
- Sealing joints in pre-cast panels
- Perimeter sealing of door and window framing
- Sealing gaps between facade and cladding panels to various building materials

Electrical Cable Penetrations





## Fire & Acoustic Rated

### Xtreme™ Fire Seal

A high quality and high performance, versatile fire retardant sealant based on Modified Silyl Polymer (MSP) technology which provides up to 4 hours of fire resistance.

**Suitable Materials**

- Aluminium (Ref: Blue Scope)
- Metal
- Glass
- Concrete
- Copper

ITEM CODE	COLOUR	UNIT SIZE	PACK SIZE	BARCODE
30610680	White	290ml	12	9310492262871

**Features**

- Up to 4 hours fire resistance
- UV resistant
- Permanently flexible
- Paintable after skinning (10 minutes)
- For interior & exterior use
- Isocyanate free

**Recommended Uses**

- Sealing expansion joints in construction which require fire resistance in floors, ceilings and walls.
- Sealing external penetrations around services and internal penetrations for services between floors, etc.

# Fillers

## Construction fillers

To perfect the building or construction of a dwelling requires a perfect finish. The best way to achieve a perfect finish is to ensure all holes, gaps and cracks are filled with products that are suited to a specific task.

Bostik fillers are specifically designed to help you achieve the best possible finish that will eliminate unsightly gaps or appearances between building materials, eliminate draughts to create a more energy efficient dwelling as well as prevent the invasion of insects and pests.







## Fillers

### Expanda Foam

Bostik Expanda Foam is a one component, multi purpose polyurethane foam that will not shrink and cures to an airtight, moisture resistant seal. The straw adapter included with each can aids in easy application, especially to fill gaps of all dimensions in the most difficult locations.

**Suitable Materials**

- Timber
- Brick
- Concrete
- Galvanised steel
- Aluminium
- Glass fibre
- Cement sheet
- Plasterboard

ITEM CODE	COLOUR	UNIT SIZE	PACK SIZE	BARCODE
30610226	Beige	500ml	12	9310492263274
30610110	Beige	750ml	12	9310492005867

**Features**

- Bostik Expanda Foam is a great insulator against heat and cold
- It greatly reduces noise, dust and draughts and blocks access by rodents
- Will not shrink

**Recommended Uses**

- The foam has powerful adhesive properties, bonding well to timber, brick, concrete, galvanised steel, aluminium, glass, fibre cement sheet and plasterboard
- General cavity filling and insulation work

# Floor Preparation

## Cementitious floor levelling compounds

The product range comprises of multiple self levelling flooring solutions compounds, engineered to suit varying floor coverings with specific set-times.



# Floor Preparation



## UL-Primer

Bostik UL-Primer is a high performance one component primer for use on porous substrates. A polymer modified formula designed for use with Bostik's Floor Levelling range.

- Suitable Materials**
- Porous substrates

ITEM CODE	COLOUR	UNIT SIZE	PACK SIZE	BARCODE
30608708	White	5L	4	9310492200897

### Features

- Fast drying and rapid tack allows for early application of levelling compound.
- Will not re-emulsify in water when cured
- Easily diluted; 2 parts water 1 part primer
- Economical, high coverage rate.
- Australian made.

### Recommended Uses

- Primer for use with Bostik's range of floor levelling products

ITEM CODE	COLOUR	UNIT SIZE	PACK SIZE	BARCODE
30840434	Grey	4L Kit	1	9310492258805

### Features

- Accepts a wide range of coverings
- Excellent bond to a range of substrates
- Easy 1:1 mixing ratio (by volume)
- Easy to mix by hand with spatula
- Excellent high build achieved in one coat
- Grey coloured epoxy applied with brush or roller.

### Recommended Uses

- For use with the Ultraset flooring adhesive range.

## Ultraseal Vapour Barrier

Bostik Ultraseal Vapour Barrier is a primer and vapour barrier / retardant to prevent moisture migration through a concrete slab to levels that will not cause swelling or cupping of timber floors.

### Suitable Materials

- Concrete
- Fibre cement
- Stone
- Masonry
- Structural plywood



# Floor Preparation

## UL-75

Excellent tile & carpet underlay. Rapid hardening self-levelling, single component cementitious underlay formulated to achieve maximum flow without any shrinkage or cracking. Results in a smooth level surface with ease of application

### Suitable Underneath

- Carpet
- Tile

ITEM CODE	COLOUR	UNIT SIZE	PACK SIZE	BARCODE
30609738	Grey	20Kg	1	9310492262888

### Features

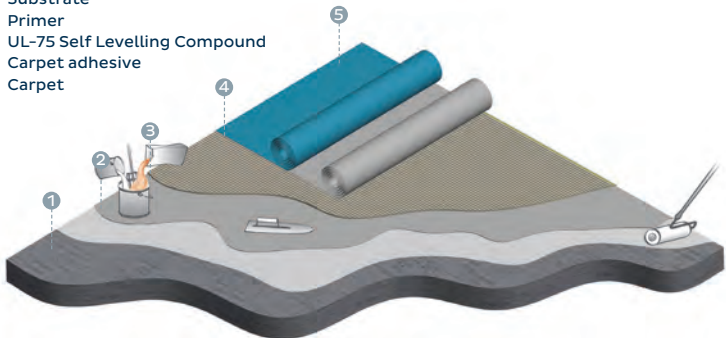
- Accepts foot traffic in 3-4 hours
- Single component product, just add water
- Fast application
- Carpet or tile may be applied after 16 hours
- Can be applied directly onto prepared concrete surfaces
- Pumpable

### Recommended Uses

- Superior underlayment for carpet and ceramic tiles (may be used under parquet, timber & vinyl after extended curing)
- Fast repairs of uneven concrete floors
- Residential, commercial and medium industrial application
- New construction and refurbishment
- Internal

### System

1. Substrate
2. Primer
3. UL-75 Self Levelling Compound
4. Carpet adhesive
5. Carpet



## UL-100

Bostik UL-100 is a superior tile & carpet underlay. A rapid hardening, self-levelling single component, cementitious underlay formulated to achieve maximum flow without any shrinkage or cracking. Results in a smooth level surface with ease of application.

### Suitable Underneath

- Carpet
- Ceramic Tiles
- Parquet
- Timber
- Vinyl

ITEM CODE	COLOUR	UNIT SIZE	PACK SIZE	BARCODE
30840423	Grey	20Kg	1	9310492258744

### Features

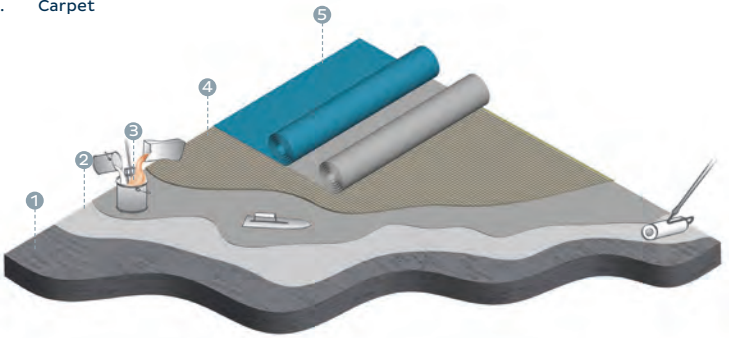
- Application thickness feather edge 25mm
- Fast repairs of uneven concrete floors
- Residential, commercial and medium industrial application
- New construction and refurbishment

### Recommended Uses

- Superior underlayment for carpet and ceramic tiles (may be used under parquet, timber & vinyl after extended curing)
- Internal

### System

1. Substrate
2. Primer
3. UL-100 Self Levelling Compound
4. Carpet adhesive
5. Carpet







# Floor Preparation

## UL-200

Bostik UL-200 is a superior vinyl & timber underlay. A rapid hardening, polymer modified, cementitious underlay formulated for maximum flow without shrinkage or cracking.

**Suitable Underneath**

- Vinyl
- Timber Floor
- Carpet
- Tile

ITEM CODE	COLOUR	UNIT SIZE	PACK SIZE	BARCODE
30605416	Grey	20Kg	1	9310492258751

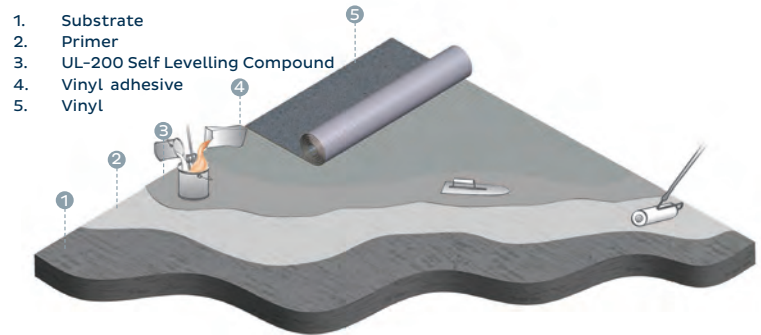
**Features**

- Application thickness feather edge to 25mm
- Reinstatement of new or existing concrete floors subject to foot traffic
- Heavy industrial traffic
- Suitable for use with subfloor heating

**Recommended Uses**

- Superior underlay for vinyl & timber floor coverings (may be used under carpet & tile if quick covering time is required)
- Residential, commercial and industrial applications
- Wet areas (not immersed)

**System**



## UL-Screed

Bostik UL-Screed is a fast setting, high build modified cementitious underlay; specially formulated for quick and easy application to achieve required falls without any shrinkage or cracking.

**Suitable Substrates**

- Concrete
- Fibre Cement Sheet

ITEM CODE	COLOUR	UNIT SIZE	PACK SIZE	BARCODE
30605691	Grey	20Kg	1	9310492258775

**Features**

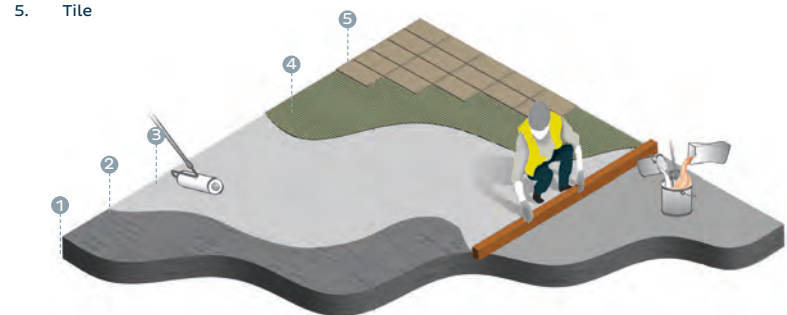
- Application thickness : 15 – 200mm Bonded & 25 – 200mm Unbonded

**Recommended Uses**

- External balconies or in ramp applications
- Wet areas where controlled falls are required
- Residential, commercial or medium industrial applications
- As a system in conjunction with Bostik wet area internal waterproofing membranes

**System**

1. Substrate
2. Primer
3. UL-Screed Self Levelling Compound
4. Tile adhesive
5. Tile



# Construction Grouts

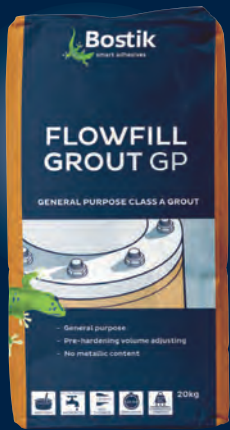
## A comprehensive suite of construction grouts

Bostik Australia is focused on offering an extensive range of cementitious products, designed specifically to address the advancements in practices throughout the civil and construction markets.

Bostik offers multi-purpose non-shrink grouts, for structural applications, including precision grouting, base plates, precast components, machinery and equipment bases, anchor bolts, concrete repair, keyway joints, load bearing pads and other non-shrink applications.



Construction Grouts



Flowfill Grout GP

Bostik Flowfill Grout GP is a Class A, flowable repair grout with controlled expansion designed for use with concrete.

Suitable Materials

- Concrete
- Core holes
- Rod holes

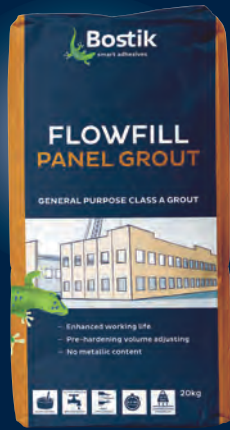
ITEM CODE	COLOUR	UNIT SIZE	PACK SIZE	BARCODE
30840122	Grey	20Kg	1	9310492250632
30840411	Grey	20Kg (WA)	1	9310492250632

Features

- Expansion in the plastic state helps compensate for shrinkage and settlement
- Contains Portland cement, graded aggregate and specialised additives.

Recommended Uses

- General purpose grouting
- Precast and pre stressed panels
- Grouting in column bases, base filling
- Filling core holes, rod holes and similar concrete defects
- Fill in grout for hollow block walls
- Joints between precast panels and other joints
- Tilt slab panels



Flowfill Panel Grout

Bostik Flowfill Panel Grout is a general purpose non-shrink (Class A) cementitious grout with enhanced working life, ideal for pre-cast and tilt-panel work.

Suitable Materials

- Concrete
- Tilt concrete slab
- Concrete pre-cast

ITEM CODE	COLOUR	UNIT SIZE	PACK SIZE	BARCODE
30840172	Grey	20Kg	1	9310492131733

Features

- Pre-hardening, volume-adjusting. Controlled gaseous expansion system compensates for shrinkage and settlement before hardening occurs.
- Ready to use, pre mixed, requires only the addition of water.
- Enhanced working life
- No metallic iron content to cause staining.
- Lower water/cement ratio reduces drying shrinkage, increases durability and reduces permeability. Can be mixed for stiff, plastic, flowable or fluid application

Recommended Uses

- All general purpose grouting
- Precast and prestressed panels
- Grouting in column bases, base infilling
- Filling core holes, rod holes, rod holes and defects in concrete
- Fill in grout for hollow block walls
- Tilt slab panels

Construction Grouts

Techflow Grout HS

Bostik Techflow Grout HS is a high performance, high strength, non-rapid setting, non-shrink (Class C) cementitious grout.

Suitable Materials

- Bolts
- Anchor holds
- Base plates

ITEM CODE	COLOUR	UNIT SIZE	PACK SIZE	BARCODE
30840124	Grey	20Kg	1	9310492551012

Features

- Dual expansion compensates for shrinkage in the plastic and hardened state
- High Strength, non-rapid setting
- Ready to use, pre-mixed, requires only the addition of water
- Can be mixed for stiff, plastic or flowable application
- Lower water/cement ratio reduces drying shrinkage increases durability and reduces permeability

Recommended Uses

- Bridge bearing and crane rails
- Anchoring bolts, bars and fittings
- Underpinning
- Heavy duty support beneath machine base plates
- Cementitious grouting where high strength is required
- Applications subject to continuous vibrations and dynamic loads
- Critical equipment base plates

Techflow Grout GP

Bostik Techflow Grout GP is a high performance, non-shrink (Class C) cementitious grout.

Suitable Materials

- Base plates
- Bolts
- Bars

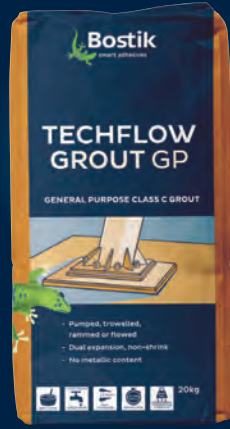
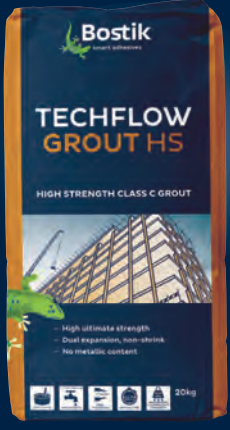
ITEM CODE	COLOUR	UNIT SIZE	PACK SIZE	BARCODE
30840156	Grey	20Kg	1	9310492131726

Features

- Dual expansion compensates for shrinkage in the plastic and hardened state
- Ready to use, pre-mixed, and requires only the addition of water
- Can be pumped, trowelled, rammed or flowed to areas where normal grouting methods do not suffice.
- Can be mixed for stiff, plastic, flowable or fluid application
- No metallic iron content to cause staining
- Lower water/cement ratio reduces drying shrinkage, increases durability and reduces permeability

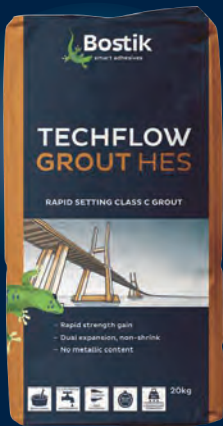
Recommended Uses

- Anchoring bolts, bars and fittings
- Underpinning
- Bridge bearing and crane rails
- All general performance grouting
- Heavy duty support beneath machine base plate
- Critical equipment base plates
- Applications subject to continuous vibrations and dynamic loads





Construction Grouts



Techflow Grout HES

Bostik Techflow Grout HES is a high performance, high strength, rapid setting non-shrink (Class C) cementitious grout.

Suitable Materials

- Bolts
- Anchor holes
- Base plates

ITEM CODE	COLOUR	UNIT SIZE	PACK SIZE	BARCODE
30840123	Grey	20Kg	1	9310492551029

Features

- Dual expansion compensates for shrinkage in the plastic and hardened state
- Rapid strength gain facilitates for rapid installation and operation of plant within matter of 2 hours
- Ready to use, pre-mixed, requires only the addition of water
- Can be mixed for stiff, plastic, flowable or fluid application
- No metallic iron content to cause staining
- Lower water/cement ratio reduces drying shrinkage, increases durability and reduces permeability

Recommended Uses

- Bridge bearing and crane rails
- Anchoring bolts, bars and fittings
- Underpinning
- Cementitious grouting where particular application requires rapid setting
- Critical equipment base plates
- Heavy duty support beneath machine base plates
- Applications subject to continuous vibrations and dynamic loads



Patchfix Structural HB

Bostik Patchfix Structural HB is a heavy-duty, polymer modified, high build, structural repair reinstatement mortar with high ultimate compressive strength and abrasion resistance. The product is shrinkage compensated, which allows it to be used for vertical, horizontal and overhead application for large or small repairs.

Suitable Materials

- Concrete
- Industrial flooring
- Concrete tanks

ITEM CODE	COLOUR	UNIT SIZE	PACK SIZE	BARCODE
30840149	Grey	20Kg	1	9310492131511

Features

- Shrinkage compensated allows for long term dimensional stability.
- One component just adds water and mix.
- High ultimate strength.
- High build repairs can be completed in a single application.
- Excellent workability.
- Easy to use.
- Excellent bond strength to concrete substrates.
- High abrasion and impact resistance.
- Low permeability provides protection from chloride attack and carbonation.
- May be coated with Bostik protective coatings.
- Extremely durable.
- High build repairs with exceptional perform and characteristics.
- Reduces the need for formwork.
- Australian Made

Recommended Uses

- Patching and repairing damaged concrete
- Structural repairs in horizontal, vertical and overhead
- Surfaces subject to low high bearing
- Terraces, balconies and facades
- Repairs to spalled concrete caused by corrosion of steel reinforcement
- Repairs to damaged industrial flooring

Construction Grouts

Patchfix Fine Render

Bostik Patchfix Fine Render is a polymer modified fairing mortar for applications in thin layers.

Suitable Materials

- Concrete
- Masonry
- Brickwork
- Concrete tilt slab
- Concrete pre-cast

ITEM CODE	COLOUR	UNIT SIZE	PACK SIZE	BARCODE
30840155	Grey	20Kg	1	9310492131535

Features

- Produces a natural concrete grey appearance to concrete or masonry surfaces
- Can be applied from feather edge up to a maximum thickness of 5mm
- Shrinkage compensated and based on hydraulic binders, high-grade quartz sand and synthetic polymers.
- Repairs where high compressive strength and abrasion resistance required

Recommended Uses

- Thin layer patching for vertical, horizontal and overhead applications
- Rendering over porous or damage concrete structures such as walls, water tanks, and sewerage and water treatment plants
- Levelling of uneven surfaces prior to coating
- Repairing honeycomb concrete, cracks and pinholes



Patchfix Concrete

Bostik Patchfix Concrete is a high performance rapid setting, high early strength, shrinkage compensated repair concrete for patching concrete roadways, pavements and floors. Bostik Patchfix Concrete is a special blend of cement and aggregates supplied in a ready to use form. The addition of water and mixing produces a high strength, heavy-duty, trowellable repair concrete that minimises shut down time and allows the repairs back in service in 2-3 hours.

Suitable Materials

- Concrete roadways
- Concrete pavements

ITEM CODE	COLOUR	UNIT SIZE	PACK SIZE	BARCODE
30840150	Grey	20Kg	1	9310492131528

Features

- Single component system of pre blended powder, simply add water and mix.
- Rapid strength gain will accept vehicle traffic in 2 hours.
- High early strength
- Abrasion and weather resistance
- One component product, just add water.
- Excellent bond strength to concrete substrate.
- High build repairs can be carried out in a single application.
- Shrinkage compensated.
- Internal or external application
- Low permeability provides protection against chlorides and carbon Dioxide.

Recommended Uses

- Repairing localised patches, small or large
- Repairing concrete roadways, warehouse floors, ramps, concrete pavements
- Maintenance repairs for areas 10mm to 180mm in depth in one layer
- Emergency repair of concrete
- Patching of worn or damaged concrete
- Concrete spalling repair
- Floor repairs and overlay



# Construction Grouts

## Associated categories – Trade vs. Applications

Bostik offers a range of products which can be classified according to trade and application.



# Hard Flooring

## A comprehensive suite of hard flooring adhesives

For many years, Bostik Ultraset® has been a market leading brand in hardwood flooring adhesives. It has been tried, tested and proven by professional tradesman and eager DIY renovators alike. Our adhesive solutions make hardwood flooring installations faster, easier and smarter.

From solid and engineered hardwoods to bamboo, Bostik technologies are designed to improve durability, acoustic properties and comfort to enhance living space. As wood becomes ever more popular, we continue to innovate cutting-edge technologies to meet the demands of flooring projects.

The Bostik range of hardwood adhesives are also compatible with the Bostik range of waterproofing and floor levelling products, so you can rely on Bostik for a total solutions-based system when applying hardwood flooring materials from start to finish.





Hard Flooring



GreenForce™

GreenForce™ is a high performance adhesive and moisture control membrane all in one. Bostik’s breakthrough AXIOS™ Tri-Linking™ Polymer Technology used in this formulation is easy to spread, easy to clean and bonds stronger than traditional urethane adhesives.

Suitable Materials

- Engineered / solid bamboo, cork & parquet
- Hardwood flooring
- Concrete
- Plywood
- Vinyl
- Ceramic tile
- Cement backer board
- Cement patch / underlayments
- Radiant-heat flooring
- Terrazzo
- Stone inlays

ITEM CODE	COLOUR	UNIT SIZE	PACK SIZE	BARCODE
30608841	Beige	26Kg	1	9310492262840

Features

- GreenForce's™ elastomeric characteristics establish an anti-fracture membrane that can bridge cracks up to 3mm. This superior elasticity allows the adhesive to move with the wood as it expands and contracts with changes in humidity and temperature over the life of the floor.
- Easy to spread and clean off prefinished flooring before and after cure
- Superior bond strength & Green Grab
- Unlimited moisture vapour protection

Recommended Uses

- Suitable for all engineered, solid, bamboo, cork and parquet hardwood flooring
- May be used over all properly prepared substrates common to hardwood flooring installations.
- No restrictions to board width or length

ITEM CODE	COLOUR	UNIT SIZE	PACK SIZE	BARCODE
30608843	Beige	26Kg	1	9310492262857

Features

- Bostik’s breakthrough AXIOS® Tri-Linking™ Polymer Technology used in this formulation is easy to spread, easy to clean and bonds stronger than traditional urethane adhesives.
- Ultraset® SingleStep2™ contains Bostik's patent-pending Thickness Control™ Spacer Technology. This proprietary feature helps ensure proper membrane thickness is maintained between the hardwood flooring and substrate.
- Provides a premium sound reduction barrier over the substrate that typically out performs 3mm acoustic matting

Recommended Uses

- High performance formulation may be used to adhere all engineered, solid, bamboo, cork and parquet hardwood flooring.
- No restrictions to board width or length



Ultraset® SingleStep2™

Ultraset® SingleStep2™ is a high performance adhesive, moisture control, and sound reduction membrane all in one.

Suitable Materials

- Engineered / solid bamboo, cork & parquet
- Hardwood flooring
- Concrete
- Plywood
- Vinyl
- Ceramic tile
- Cement backer board
- Cement patch / underlayments
- Radiant-heat flooring
- Terrazzo
- Stone inlays

Hard Flooring

PRODUCT COMPARISON CHART

	Ultraset SingleStep2™	GreenForce™
Axios™ technology	Yes	Yes
Moisture limits (Max MVER per ASTM F1869)	Unlimited	Unlimited
Thickness Control™ spacer technology	Yes	No
Easy clean after cure	Yes	Yes
Workability	Easy	Easy
Crack bridging	3.2mm	3.2mm
VOC	Zero	Zero
Antimicrobial protection	Yes	Yes
Tacking (Green grab)	Yes	Yes
Concrete must be dry to the touch, fully cured and properly prepared		
Sound Abatement properties	Yes	No

\* Sound Abatement properties (equivalent to 3mm acoustic matting)





16Kg



600mL



16Kg



600mL

300mL

## Hard Flooring

### Ultraset HP

Bostik Ultraset HP is a one part, solvent and isocyanate free MS polymer based elastomeric adhesive formulated to adhere most types of wood, parquet, solid strip, engineered, bamboo and sheet timber flooring systems to flat concrete and timber subfloors, or over existing floors.

#### Suitable Materials

- Hardwood
- Solid strip soft wood
- Engineered flooring
- Bamboo flooring
- Concrete
- Timber subfloors

ITEM CODE	COLOUR	UNIT SIZE	PACK SIZE	BARCODE
30840417	Brown	600ml	20	9310492258386
30840416	Brown	16Kg	1	9310492258379

#### Features

- Non hazardous solvent and isocyanate free formula.
- Very Low VOC, qualifies under GEV-EMICODE as EC1 (very Low emissions)
- Non flammable
- One component, no mixing, ready to use
- Easy to spread while maintaining stable peaks
- Will not re-emulsify when in contact with moisture.
- Tested to ASTM C794 for peel adhesion to various species of Australian Hardwood
- Remains flexible
- Excellent initial grab and final bond strength
- Suitable over radiant heating
- Australian made

#### Recommended Uses

- Adhering parquet, solid strip soft wood and hard wood flooring engineered flooring and bamboo flooring to concrete or timber subfloors
- Adhering recommended acoustic underlays as an intermediate layer between subfloor and flooring system

### Ultraset SF

Bostik Ultraset SF is a one part solvent free, elastomeric polyurethane adhesive formulated to adhere most types of wood, parquet, solid strip, engineered, bamboo and sheet timber flooring systems to flat concrete and timber subfloors, or over existing floors.

#### Suitable Materials

- Most types of wood
- Parquet
- Solid strip
- Engineered bamboo / timber sheet systems
- Flat concrete
- Timber subfloors

ITEM CODE	COLOUR	UNIT SIZE	PACK SIZE	BARCODE
30840208	Brown	300ml	20	9310492250236
30840110	Brown	600ml	20	9310492131979
30604590	Brown	16Kg	1	9310492258324

#### Features

- Solvent free formulation
- Zero VOC
- Non flammable
- No mixing, ready to use
- One component
- Easy to spread
- Will not re-emulsify when in contact with moisture
- Tested to ASTM C794 for peel adhesion to various species of Australian hardwood.
- Remains Flexible
- Excellent bond strength
- Recommended adhesive by major timber manufacturers
- Australian made

#### Recommended Uses

- Adhering parquet, solid strip, engineered and bamboo flooring to concrete or timber subfloors
- Adhering recommended acoustic underlayments as an intermediate layer between subfloors and flooring systems

## Hard Flooring

### Ultraset DX

Bostik Ultraset DX is a single part, semi rigid, low foaming, quick setting, moisture cured polyurethane adhesive. When fully cured, the adhesive provides a very strong bond with excellent resistance to water and many chemicals. Ultraset DX is designed for bonding porous to porous or non-porous substrates.

#### Suitable Materials

- Bonds to most timbers
- Strip flooring
- Concrete
- Particleboard
- Plywood
- MDF cement sheet

ITEM CODE	COLOUR	UNIT SIZE	PACK SIZE	BARCODE
30840477	Brown	16Kg	1	9310492260112

#### Features

- High strength adhesive
- Expands to fill minor voids in uneven surfaces
- Very high bond strength.
- Fast set
- Single part, no mixing
- Strong grab and initial bond
- Economical coverage up to 22m²

#### Recommended Uses

- High strength adhesive for bonding overlay or strip timber to concrete
- Bonding most types of timbers, strip flooring and sheet timber flooring systems to substrates such as concrete, particleboard, structural plywood, MDF cement sheeting

### Timberset

Bostik Timberset is a water based, latex adhesive, that dries to form a strong bond between timbers.

#### Suitable Materials

- Mosaic
- Veneer
- Timber
- Parquetry

ITEM CODE	COLOUR	UNIT SIZE	PACK SIZE	BARCODE
30840425	Brown	16Kg	1	9310492258706

#### Features

- High solids content
- Water based, easy to clean
- Non flammable
- Economical
- Easy to apply

#### Recommended Uses

- Specifically formulated for adhering parquetry, mosaic to timber substrates





# Hard Flooring



## Simple-Fix

Bostik Simple-Fix has extremely high bond strength, making it the perfect solution for bonding wood to wood or wood to concrete. Simple-Fix is specifically formulated to be a simple repair solution that is easily dispensed with an off-the shelf caulking gun.

### Suitable Materials

- Wood
- Concrete
- Bamboo flooring
- Parquet

ITEM CODE	COLOUR	UNIT SIZE	PACK SIZE	BARCODE
30840372	Yellow	250ml	6	747224351807

### Features

- Fills hollow spots
- Bonds to wood and concrete
- Low odour
- Zero VOC formula
- Does not contain water

### Recommended Uses

- Fits in an off shelf caulking gun
- Versatile formulation works with engineered wood, parquet, solid wood and bamboo flooring

# Waterproofing

## Professional waterproofing products to protect your installation

Bostik offers a wide range of waterproofing and crack isolation products. Waterproofing is an important element in protecting your investment, preventing water from leaking into unwanted areas where it can cause damage. At times, this damage will be unseen until it is too late. Ensure that your next project includes properly installed Bostik waterproofing systems. Typical of areas that require waterproofing are: laundries, shower stalls, bathrooms, kitchens, swimming pools and spas.

Product lines featured in our waterproofing range include:

- Bond breakers / bandages
- Waterbased membranes
- Polyurethane membranes





# Waterproofing



## Multiprime

Multiprime is a general primer for porous surfaces that improves open time and bond of adhesive.

**Suitable Materials**

- Concrete
- Render
- Fibre cement
- Plasterboard
- Hebel™
- Timber

ITEM CODE	COLOUR	UNIT SIZE	PACK SIZE	BARCODE
30804170	Opaque Pink	5L	4	9329431000771
30804109	Opaque Pink	20L	1	9310492255903

**Features**

- Improves bond of waterproofing membranes
- Improves open-time
- Seals in minor dust
- Can improve strength of surface

**Recommended Uses**

- Used on all porous surfaces
- Priming porous surfaces before tiling or waterproofing
- Outdoors and indoors
- Floors and walls

## Moisture Seal

Bostik Moisture Seal is a two-part epoxy for priming under flooring adhesives and waterproofing membranes. The solvent-free composition is compatible with a wide range of coverings including the Bostik Ultraset flooring adhesives and Dampfix waterproofing ranges.

**Suitable Materials**

- Concrete
- Structural plywood
- Fibre cement
- Metal
- Stone brick
- Masonry

ITEM CODE	COLOUR	UNIT SIZE	PACK SIZE	BARCODE
30840500	Green	10L Kit	1	9310492260662

**Features**

- An approved moisture vapour barrier suitable for direct contact with drinking water
- Accepts a wide range of coverings
- Easy 1:1 mixing ratio of A and B parts
- Conforms to ASTM E96 water vapour transmission (negative pressure) tests
- Withstands hydrostatic water pressure up to 25m or 250kPa
- Pre-packed, ready to mix kit

**Recommended Uses**

- Accepts a wide range of coverings
- Excellent bond to a range of substrates



# Waterproofing

## PrimeGrip Non-Porous

A new generation of one component, universal ready to use solvent free primer and adhesion promoter specifically designed to improve bonding onto impervious substrates. Bostik PrimeGrip Non-Porous Primer provides high strength film over non-porous surfaces that will allow bonding of cementitious products

**Suitable Materials**

- Tiling
- Render

ITEM CODE	COLOUR	UNIT SIZE	PACK SIZE	BARCODE
30607467	Milky Beige	7Kg	1	9310492261188

**Features**

- Solvent free
- One-part system; ready to use
- Easy to use
- High adhesion to various non-porous substrates
- Brush or roller applied
- Odourless. Can be used in all types of location
- No need to grind or etch the surfaces
- Designed for commercial and residential application

**Recommended Uses**

- Existing tiles
- Old & crunchy vinyl tiles
- Residues of old acrylic, alcohol or bituminous adhesives
- Most pre-formed shower bases
- Tiling over Bostik Moisture Seal (moisture and vapour barrier)
- Also suitable for porous substrate (concrete, screed, etc.)

## Specialist Primer

High performance aqueous primer for use on top of cured Dampfix PU and other specialist applications. Viscous purple liquid. Use only with approved products / systems.

**Suitable Materials**

- Walls
- Floor

ITEM CODE	COLOUR	UNIT SIZE	PACK SIZE	BARCODE
30608709	Purple	5L	1	9310492257426

**Approved Compatible Products**

- Bostik 2 Part Tile Adhesive
- Dampfix Gold (min 1.2mm dry film thickness)

**Recommended Uses**

- May be used on the surface of Dampfix PU prior to covering with approved products





Waterproofing



Dampfix Gold

Dampfix Gold is a urethane acrylic membrane for internal and external waterproofing.

Suitable Materials

- Concrete
- Cement rendered masonry
- FC sheeting
- Water resistant
- Plasterboard
- Structural plywood

ITEM CODE	COLOUR	UNIT SIZE	PACK SIZE	BARCODE
30800489	Gold	15L	1	9329431002980
30613910	Grey	4L	4	9310492263755
30803384	Grey	15L	1	9310492259543

Features

- Class 3, high elasticity
- Fast drying
- Recoat in 2 hours @ 20 °C & 50% RH
- Tile next day in most conditions
- May be tiled directly using approved Bostik tile adhesives
- Reinforced with clump free fibres
- High resistance to detergents & bleach
- Will not re-emulsify after curing
- Does not embrittle with age
- Excellent adhesion to concrete; rendered masonry; wet area plasterboard; FC sheet & plywood
- Can be applied to damp substrates, i.e. no free water

Recommended Uses

- As a waterproofing membrane to internal wet area shower, bathroom, kitchen, laundry & toilet areas
- As a waterproofing membrane to external balconies, rooftops & podium levels



Part A



Part B

Dampfix Immersed

Bostik Dampfix Immersed is a two component water based acrylic modified cement based, Class 3 waterproofing membrane system that meets the requirements of AS3740 by complying with AS/NZ 4858.

Suitable Materials

- Tile
- Concrete
- Cement rendered masonry
- FC sheeting
- Plasterboard
- Structural plywood (Type A Stamped “PAA JAS-ANZ” to AS/NZS 2269-2004) substrates.

ITEM CODE	COLOUR	UNIT SIZE	PACK SIZE	BARCODE
30840502	White Liquid	Part A 20L	1	9310492260686
30840501	Grey Powder	Part B 20Kg	1	9310492260679

Features

- Class 3, high elasticity.
- Fast drying. Recoat in 1-2 hours @ 22 ° C & 50% RH. Flood test after 24 hours @ 22°C / 50% RH.
- Can be tiled after 4 hours @ 22°C / 50% RH in non-critical areas.
- Compatible for tiling with Bostik tile adhesive system.
- Excellent adhesion to concrete; rendered masonry; wet area plasterboard; FC sheet & plywood. Can be applied to damp substrates (provided no free surface water)
- Brush, roller or trowel applied.
- Designed for commercial and residential application

Recommended Uses

- As a waterproofing membrane under tile to internal wet area shower, bathroom, kitchen, laundry and toilet areas when installed to AS/NZ3740.
- As a waterproofing membrane under tile or other wearing surface systems to external balconies, rooftops and podium levels when installed to AS/NZ 4654.2.
- As an exposed waterproofing membrane to external applications subjected to light pedestrian traffic only.

Waterproofing

Dampfix Rapid

Dampfix Rapid is a one component rapid drying waterbased polyurethane, Class 3 waterproofing membrane system that meets the requirements of AS3740 by complying with AS/NZ 4858. Dampfix Rapid waterproofing membrane is a 2-coat system, to be applied over primed “porous & non-porous” substrates.

Suitable Materials

- Concrete
- Cement rendered masonry
- FC sheeting
- Water resistant plasterboard
- Structural plywood (Type A Stamped “PAA JAS-ANZ” to AS/NZS 2269-2004)

ITEM CODE	COLOUR	UNIT SIZE	PACK SIZE	BARCODE
30840503	Blue	15L	1	9310492260693

Features

- Class 3, high elasticity
- Fast drying. Recoat in 1-2 hours @ 22°C & 50% RH
- Flood test after 24 hours @ 22°C / 50% RH
- Can be tiled after 4-6 hours @ 22°C / 50% RH in non-critical areas
- Compatible for tiling with Bostik tile adhesive system
- Can be applied to damp substrates (provided no free surface water)
- Brush or roller applied
- Designed for commercial and residential application

Recommended Uses

- As a waterproofing membrane under tile to internal wet area shower, bathroom, kitchen, laundry & toilet areas when installed to AS/NZ 3740
- As a waterproofing membrane under tile or other wearing surface systems to external balconies, rooftops & podium levels when installed to AS/NZ 4654.2
- All applications to be covered by tile or other protective system



Dampfix PU

Dampfix PU polyurethane waterproofing membrane is specifically formulated for applications where the waterproofing membrane is to be covered by tiling systems laid on an unbonded reinforced screed to falls (ref:Guide to the installation of Ceramic Tiles - AS3958.1)

Suitable Materials

- Concrete
- Cement rendered masonry
- FC sheeting
- Plasterboard
- Structural plywood

ITEM CODE	COLOUR	UNIT SIZE	PACK SIZE	BARCODE
30603247	Grey	15L	1	9329431001327

Features

- Provides a tough elastomeric waterproofing membrane when fully cured
- Minimum Dry film thickness achievable in 2 coats
- Does not contain bitumen
- Will not bleed through porous materials such as marble, natural stone and slate tiles
- Will not re-emulsify when immersed, after full cure.
- One component, ready to use
- Easy to apply
- Excellent bond strength to most primed common building substrates
- Reaches sufficient cure in 72 hours allowing for fast placement of mortar beds & screeds

Recommended Uses

- As a waterproof membrane between the structural substrate and the reinforced unbonded tile screed in both internal and external applications.
- As a waterproofing membrane to internal wet area shower, bathroom, kitchen, laundry and toilet areas.
- As a waterproofing membrane to external balconies and podium levels



# Waterproofing



## Dampfix Bandage

Dampfix Bandage is a premium reinforcing tape designed to be used with Dampfix waterproofing membranes. It is a high performance bond breaker and joint isolation system. The prefabricated open weave material, strengthened with an elastomeric rubber reinforcing layer is designed to maximise elongation in critical areas.

### Suitable Materials

- Concrete slab
- Wall to floor joints
- Wall to wall joints

ITEM CODE	COLOUR	UNIT SIZE	BARCODE
30840380	Grey	1 x Strip Roll 50m x 12cm	9310492258669

### Features

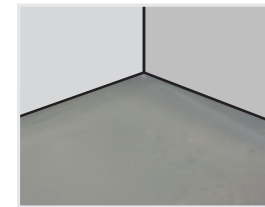
- Puncture resistant reinforced layer
- High strength and excellent tear resistance
- Flexible weave = fast and easy wetting with maximum bond to substrate
- Preformed options available
- Embossed crease for easy fold in junctions
- Useful measurement marks
- Printed face is release treated so membrane de-bonds easily.
- Accommodates movement
- Unlike bedding cloth mesh, does not reduce the class of membrane. Complies with AS3740 and AS4654 requirements\*
- Suitable for class II and III membranes\*

### Recommended Uses

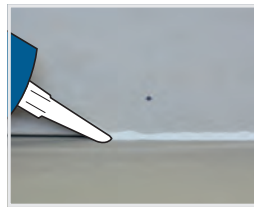
- Vertical and horizontal joints and junctions
- On any substrate suitable for chosen Dampfix membrane
- Sheet joints
- Compatible with all Dampfix membranes
- Static cracks in concrete slabs interior (AS3740) and exterior (AS4654)

## Step By Step Guide

Check area



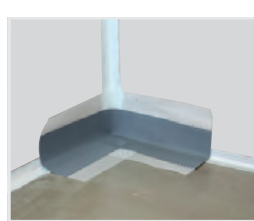
Seal joints



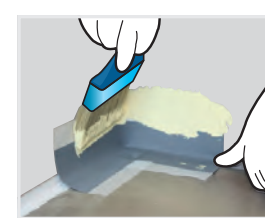
Prime area



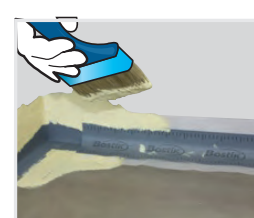
Place bandage



Bed mesh area



Bed tape mesh



# Tiling

## Tiling systems

Bostik tiling systems allow the tiler to achieve high quality and consistent results. Our products are backed up with world class innovation and a fundamental understanding of the science behind performance. We have a firm commitment to technical integrity and our products are formulated to exceed classification requirements stated on the packaging. Commercial, industrial and domestic installations are secure with Bostik, the comprehensive range allows selection of the most appropriate solution for each project.





Tiling



Asaflex

Asaflex is a two part adhesive with exceptional flexibility and superb bond. Designed for jobs where flexibility is critical. Suitable for commercial and high traffic tiling and can be used outdoors. Best choice for tiling onto timber or acoustic mat.

Suitable Materials

- Concrete
- Render
- Fibre cement
- Plasterboard
- Timber

ITEM CODE	COLOUR	UNIT SIZE	PACK SIZE	BARCODE
30608706	Off White	15L Liquid	1	9329431000856
30840351	Off White	15Kg NSW Powder	1	9310492255842

- Features
- Superb flexibility
  - Good acoustic properties
  - Excellent bond
  - Commercial grade
  - Superior water resistance
- Recommended Uses
- Whenever flexibility is vital
  - Outdoors (balconies)
  - Tile on timber
  - Apartments
  - Suitable for acoustic mat, wall and floor
  - High traffic commercial
  - Dampfix Gold
  - Use Dampfix PU system

Conflex

Conflex is a premium rubber modified tile adhesive designed for demanding or high traffic applications. Excellent all round adhesive suitable for commercial, high traffic and tile-on-tile installations.

Suitable Materials

- Concrete
- Render
- Fibre cement
- Plasterboard

ITEM CODE	COLOUR	UNIT SIZE	PACK SIZE	BARCODE
30840342	Off White	20Kg NSW	1	9310492255545
30840344	Off White	20Kg WA	1	9310492258973

- Features
- General tiling
  - When one adhesive is needed for most jobs
  - Where a superior bond is needed
- Recommended Uses
- High traffic
  - Commercial or domestic
  - Suitable with Dampfix Gold
  - Wall and floor

Tiling

Evoflex

Superior high polymer modified tile adhesive. With in-built “Evo-Lastic Technology” Evoflex is perfect for laying heavy large format tiles.

Suitable Materials

- Concrete
- Render and early age (green) screeds
- Fibre cement
- Plasterboard
- Heated concrete slabs
- Bostik compatible waterproofing membrane

ITEM CODE	COLOUR	UNIT SIZE	PACK SIZE	BARCODE
30840446	Off White	20Kg	1	9310492259888

- Features
- Superb non-lipping
  - Smooth trowel feel
  - Strong grab
  - Excellent bond
  - Long adjustment time
  - Early grouting (6-8 hours)
  - All-rounder; no additive required
  - Single component, 2 pack performance
- Recommended Uses
- Perfect for heavy large format tiles
  - High traffic
  - Where superior bond is needed
  - When one adhesive is needed for most jobs
  - All moisture stable tile types including porcelain, ceramic, terracotta, terrazzo and stone.

Excelflex

Excelflex is a rubber modified flexible tile adhesive. Well suited to general tiling where flexibility is desired. Suitable for domestic and general tiling.

Suitable Materials

- Porcelain
- Ceramic
- Terracotta
- Terrazzo
- Glass
- Stone

ITEM CODE	COLOUR	UNIT SIZE	PACK SIZE	BARCODE
30840532	Off White	20Kg WA	1	9329431001693
30840533	Off White	20Kg NSW	1	9329431001693

- Features
- Flexible
  - General purpose
  - Versatile all rounder
- Recommended Uses
- General tiling
  - Domestic
  - Where some flexibility is needed
  - All moisture stable tiles



Tiling



Megafix

Megafix is a brilliant white adhesive perfect for use in bathrooms with mosaics or when a very white adhesive is needed.

Suitable Materials

- Tiles
- Porcelain
- Ceramic
- Terracotta
- Terrazzo
- Glass
- Stone

ITEM CODE	COLOUR	UNIT SIZE	PACK SIZE	BARCODE
30840538	White	20Kg NSW	1	9329431001754

Features

- Brilliant white colour
- Smooth and Unsanded
- Perfect for bathrooms and mosaics

Recommended Uses

- Light coloured or translucent tiles
- Glass tiles
- Bathroom tiles
- Whenever a bright white adhesive is needed
- All moisture stable tiles



Superfixall

Superfixall is a tile adhesive designed for use on rigid surfaces. Suitable for domestic tiling. Use with Megalastic to upgrade flexibility and bond strength but maintain long open time.

Suitable Materials

- Concrete
- Screed
- Render

ITEM CODE	COLOUR	UNIT SIZE	PACK SIZE	BARCODE
30840259	White	20Kg	1	9310492255521

Features

- Extended open time
- Available in White colour
- Upgrade with Megalastic

Recommended Uses

- General tiling
- Ceramic tiles
- Domestic
- Wall and floor

Tiling

Ultra Mastik

Ultra Mastik is a white tile adhesive with superior anti-slip; able to hold a 600 x 600mm tile. Smooth feel for easy trowelling and suitable for commercial and high traffic installations.

Suitable Materials

- Concrete
- Render
- Fibre cement
- Plasterboard

ITEM CODE	COLOUR	UNIT SIZE	PACK SIZE	BARCODE
30840346	White	20Kg NSW	1	9310492252780
30840252	White	20Kg WA	1	9310492252780

Features

- Holds 600x600mm wall tiles
- Smooth trowel feel
- Excellent water resistance
- Commercial grade
- White colour

Recommended Uses

- Render and early age (green) screed
- Dampfix Gold
- Wall and floor
- High traffic
- Suitable for immersion when 50% mix water is replaced with Megalastic
- Commercial

Designer Grout

Designer Grout is an excellent commercial grade tile grout. Very easy clean-up and superb working properties mean less mess, less waste and a better finish. Suitable for walls and floors for exterior and interior tiling. Available in a range of designer colours.

Suitable Materials

- All moisture stable tiles

ITEM CODE	COLOUR	UNIT SIZE	PACK SIZE	BARCODE
30605631	100 White	20Kg	1	9310492257662
30840385	210 Antique White	20Kg	1	9310492257693
30605630	220 Moleskin	20kg	1	9310492257723
30604718	230 Tuscan	20Kg	1	9310492257754
30604373	410 Silver Gris	20Kg	1	9310492257846
30604377	420 QLD	20Kg	1	9310492257877
30840390	430 Grey	20Kg	1	9310492257907
30604380	440 Delorian Grey	20Kg	1	9310492257938
30605659	510 Travertine	20Kg	1	9310492257969
30840396	530 Taupe	20Kg	1	9310492258027
30605660	610 Sandstone	20kg	1	9310492258089
3060438	810 Pewter	20Kg	1	9310492258171
30604387	820 Charcoal	20Kg	1	9310492258201
30840530	White Smooth NSW	10Kg	1	9329431001853
30605658	White Smooth NSW	20Kg	1	9329431001877

Features

- Very easy clean-up
- Finish in any direction
- Mould resistant
- Narrow (1.5mm) to wide (15mm) joints

Recommended Uses

- Walls and floors
- Internal and external applications
- Swimming pools (Use with 50% Megalastic)
- All tiling installations







# Tiling

## Sanded Grout

Sanded Grout is a cement based grout used for grouting slate, quarry and treated terracotta tiles or where wider joints are required. Suitable for external installations

### Suitable Materials

- Slate
- Terracotta tiles
- Quarry tiles

ITEM CODE	COLOUR	UNIT SIZE	PACK SIZE	BARCODE
30840406	920 Off White Sanded	20kg	1	9310492258249
30804401	940 Neutral Sanded	20Kg	1	9310492258263

### Features

- Suitable for grout joints from 5mm to 20mm wide
- Easy water clean up
- Low shrinkage
- High strength
- Available in 5 colours

### Recommended Uses

- External applications
- Wide joints

## Epoxy Grout

A 2-Part coloured epoxy grout for situations that require high chemical and mechanical demands. Suitable for wall and floor tiles and can also be used as an adhesive. Fully submersible, perfect for swimming pools. Also suitable for kitchens, hospitals, industrial areas or anywhere where hygiene and/or durability are important. Supplied in a convenient one pail kit with the colour pre-combined in part A and part B in the lid compartment.

Available in a range of colours

### Suitable Materials

- Compatible with all tiles (including moisture sensitive)

ITEM CODE	COLOUR	UNIT SIZE	PACK SIZE	BARCODE
30606705	1210 Antique White	5Kg	1	9310492260440
30606706	1420 QLD	5Kg	1	9310492260457
30606707	1440 Delorian Grey	5Kg	1	9310492260464
30606709	1820 Charcoal	5Kg	1	9310492260471

### Features

- Easy to apply, easy to clean-up
- Colour consistent (colour fully pre-mixed with resin)
- Hygienic
- Highly stain resistant, non-efflorescing
- Water washable during clean-up
- High chemical and abrasion resistance
- Resistant to high pressure cleaning
- Can be used as an adhesive
- Convenient pack format with both components in the same pail with space to mix

### Recommended Uses

- Walls and floors
- Interior or exterior
- Commercial kitchens, high traffic areas
- Industrial areas
- Food and beverage industry
- Paper, leather, textile and chemical industries
- Hospitals, laboratories
- Water treatment plants
- Battery loading rooms , electroplating rooms
- Fully immersed or always wet (pools, showers, kitchens)
- Where hygiene and chemical resistance is critical
- Areas subjected to harsh cleaning or other chemicals

# Tiling

## General Surface Preparation and Tiling Examples Wall and Floor

The following are examples of common applications. The Bostik adhesives suggested are a good choice but there may be other suitable alternatives if required.

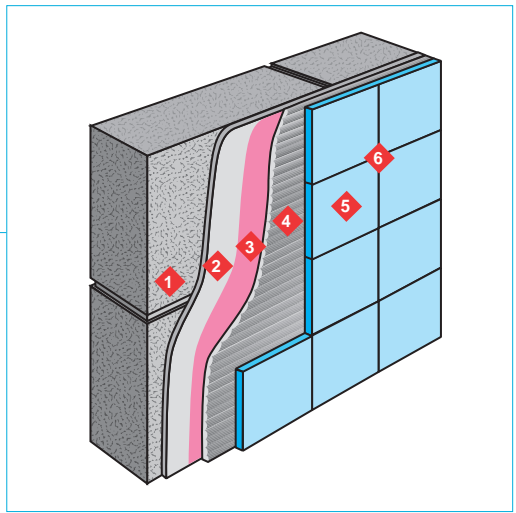
Remember that the surface preparation advice is general only. Actual requirements may vary from job to job.

Always make sure the surface is suitable for the intended use and contact Bostik for specific advice or if you have a situation that is not described.

Remember that you can always call Bostik for help Technical Advice 1800 267 845

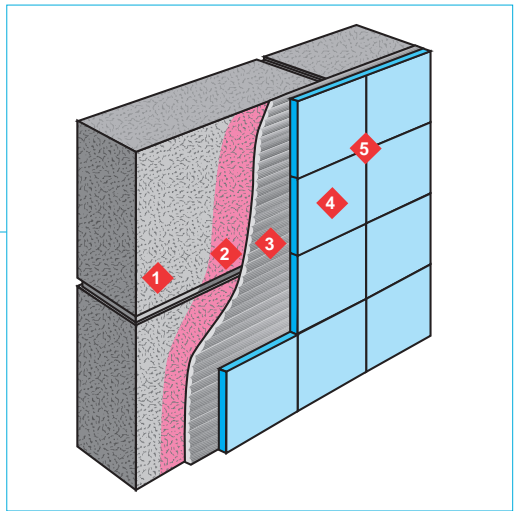
## Walls Render

- 1 Underlying wall
- 2 Render
- 3 Multiprime
- 4 Ultra Mastik/Megafix
- 5 Tiles
- 6 Coloured Grout



## Walls Block / Brick

- 1 Block/brick
- 2 Multiprime
- 3 Ultra Mastik
- 4 Tiles
- 5 Coloured Grout

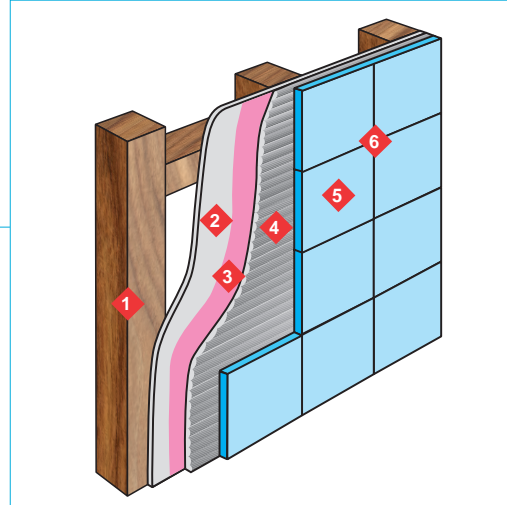


## Tiling

### Walls:

#### Fibre Cement (FC) Sheet

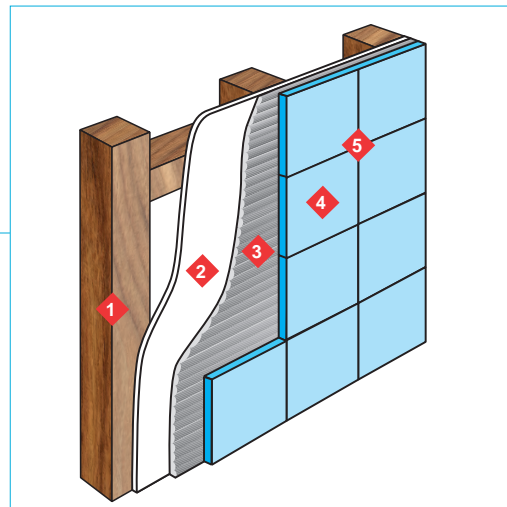
- 1 Rigid framework
- 2 FC sheet
- 3 Multiprime
- 4 Megafix
- 5 Tiles
- 6 Coloured Grout + Megalastic



### Walls:

#### Plasterboard

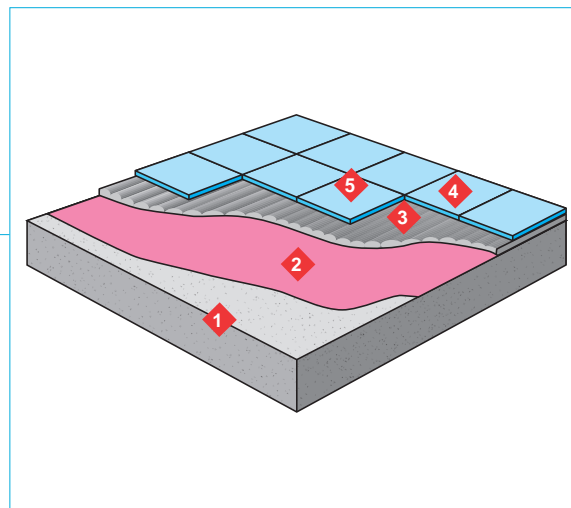
- 1 Rigid framework
- 2 Plasterboard
- 3 Ultra Mastik
- 4 Tiles
- 5 White Smooth Grout



### Floors:

#### Concrete

- 1 Cured and prepared concrete
- 2 Multiprime
- 3 Evoflex
- 4 Tiles
- 5 Coloured Grout

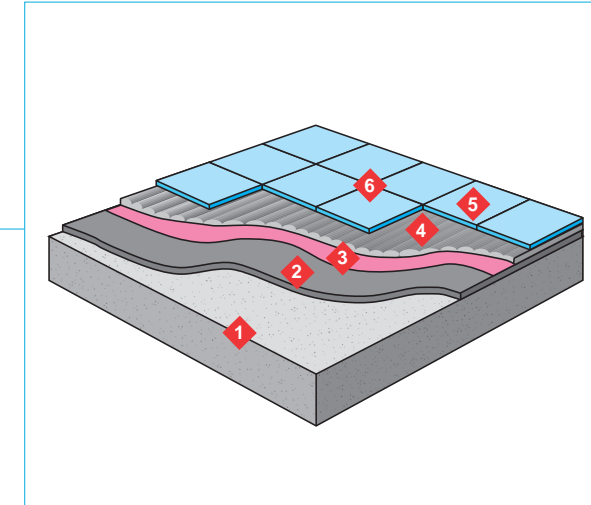


## Tiling

### Floors:

#### Screed

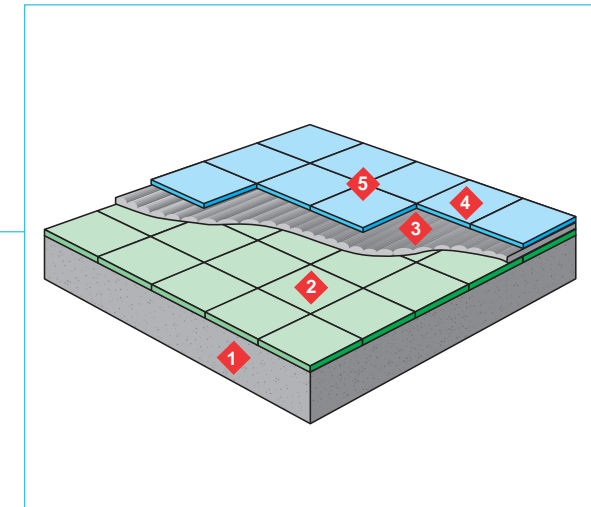
- 1 Substrate
- 2 Cured and prepared screed
- 3 Multiprime
- 4 Evoflex
- 5 Tiles
- 6 Coloured Grout



### Floors:

#### Existing Tiles

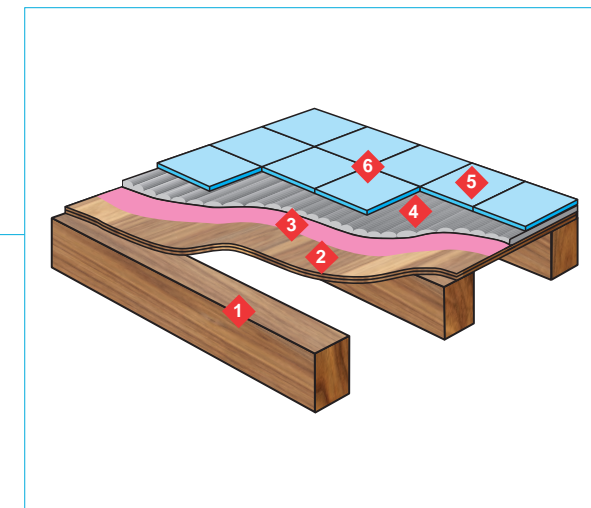
- 1 Rigid substrate capable of supporting weight of system
- 2 Prepared existing tiles
- 3 Primer
- 3 Conflex
- 4 Tiles
- 5 Coloured Grout



### Floors:

#### Timber

- 1 Underlying support structure
- 2 Prepared timber
- 3 Multiprime
- 4 Asaflex
- 5 Tiles
- 6 Coloured Grout + Megalastic



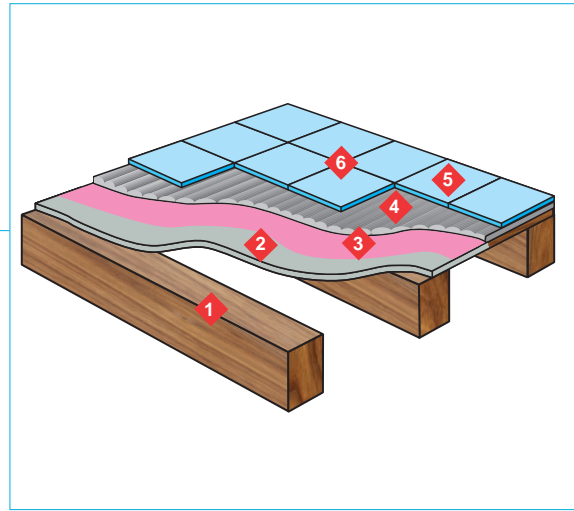


## Tiling

### Floors

#### Compressed Fibre Cement (FC) Sheet

- 1 Underlying wall
- 2 Render
- 3 Multiprime
- 4 Conflex
- 5 Tiles
- 6 Coloured Grout



# Tools & Accessories

**Made for structural and non-structural applications**

Any job is easy when you have the right tools as this minimises time required to complete the job and effort required. The Bostik range of tools and accessories will set you on the right path.



Tools and Accessories



Handy Wipes

Bostik Handy Wipes are waterless hand towels that have a convenient scrub side for removing tough grime and one for gentle wiping away.

Suitable Materials

- Tools
- BBQ
- Boat
- Car
- Equipment
- Hands
- Household surfaces
- Kitchen surfaces
- Bathroom surfaces

ITEM CODE	COLOUR	UNIT SIZE	PACK SIZE	BARCODE
30840451	Purple	70 Towels	6	9310492259963

Features

- Convenient, easy tear off towels
- Contains d-Limonene
- Won't scratch or mark
- Gentle on hands and skin
- Tough on dirt
- Pre-moistened, disposable, multi-purpose
- Waterless
- Convenient packaging allows for easy dispensing

Recommended Uses

- At work – clean tools and equipment
- At home – Kitchen, bathroom,
- Removes sealant, tar, dirt, grease, oil, adhesive, paint and ink from tools and equipment

Application Pro Cartridge Gun

ITEM CODE	UNIT SIZE	PACK SIZE	BARCODE
30840021	300ml Cartridge	1	9310492005409

- This heavy duty Pro Gun operates manually and holds 300ml cartridges.

Application Barrel Gun Clear 37cm

ITEM CODE	UNIT SIZE	PACK SIZE	BARCODE
30803304	37cm - 600ml sausage	1	9310492443003

The Application Barrel Gun has a 37cm long aluminium barrel that is used for 600ml sausages. This gun is manually operated.



Tools and Accessories

Axios 6mm V-Notch Trowel

ITEM CODE	UNIT SIZE	PACK SIZE	BARCODE
30609631	6mm V Notch	5	9310492262864

- Axios 6mm V-Notch trowel.
- TPR Handle
- Professional quality
- Soft, ergonomic grip
- Recommended applicator for Bostik Axios timber flooring adhesives; GREENFORCE and ULTRASET SINGLESTEP 2



Application Trowel Bostik DX

ITEM CODE	UNIT SIZE	PACK SIZE	BARCODE
30840242	26mm x 6mm x 5mm	36	9310492258959

- Application Trowel Bostik DX Flat V-notch



TG-4 Hot Melt Glue Gun

ITEM CODE	UNIT SIZE	PACK SIZE	BARCODE
30803287	N/A	4	9310492258652

- The Bostik TG-4 Hot Melt Glue Gun is an electronically operated applicator designed to dispense hot melt glue to bond most materials quickly and efficiently. If you use tapes, fasteners, staples or liquid adhesives, the Bostik TG-4 Glue Gun will do it better, faster and neater with just the press of a trigger.





[illegible][illegible][illegible][illegible]



**SMART HELP: 1800 267 845**

Bostik Australia  
Level 1, 6 English Street  
Essendon Fields, VIC 3041

[www.bostik.com.au](http://www.bostik.com.au)

Edition : 02.2019